



| The European Synchrotron

A MODEL OF INTERNATIONAL COOPERATION: 21 PARTNER NATIONS

13 ESRF Member states:

France	27,5 %
Germany	24 %
Italy	13,2 %
United Kingdom	10,5 %
Russia	6 %
Benesync	5,8 %
(Belgium, The Netherlands)	
Nordsync	5 %
(Denmark, Finland, Norway, Sweden)	
Spain	4 %
Switzerland	4 %

8 ESRF Associate countries:

Israel	1,5 %
Austria	1,3 %
Centralsync	1,05%
(Czech Republic, Hungary, Slovakia)	
Poland	1 %
Portugal	1 %
South Africa	0,3 %

Contribution to the budget in %



21 partner nations

Annual budget: 100 million euros

Members of staff: 630 of 40 different nationalities

Legal status: Private civil company subject to French law

The ESRF produces the most intense synchrotron generated light in the world

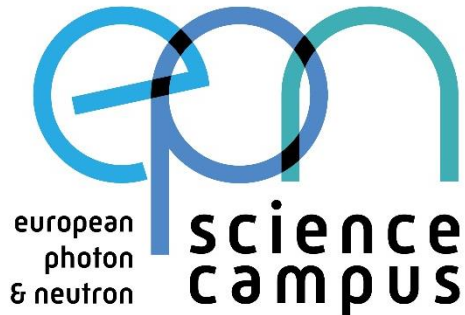
ESRF, Grenoble, France



A research facility unique worldwide

- ✓ **6,500 scientific visitors** every year including **4,000 users**
- ✓ **2,000 proposals** per year: **900 accepted**, 1,550 experimental sessions
- ✓ **30% of the research involves industrial developments**

A UNIQUE SITE FOR RESEARCH AND INNOVATION





European Intergovernmental Research Organisations forum

Collaborations on:

- Technology transfer
- Instrumentation
- International affairs
- Information technology
- Education and outreach



**Health,
Structural biology**



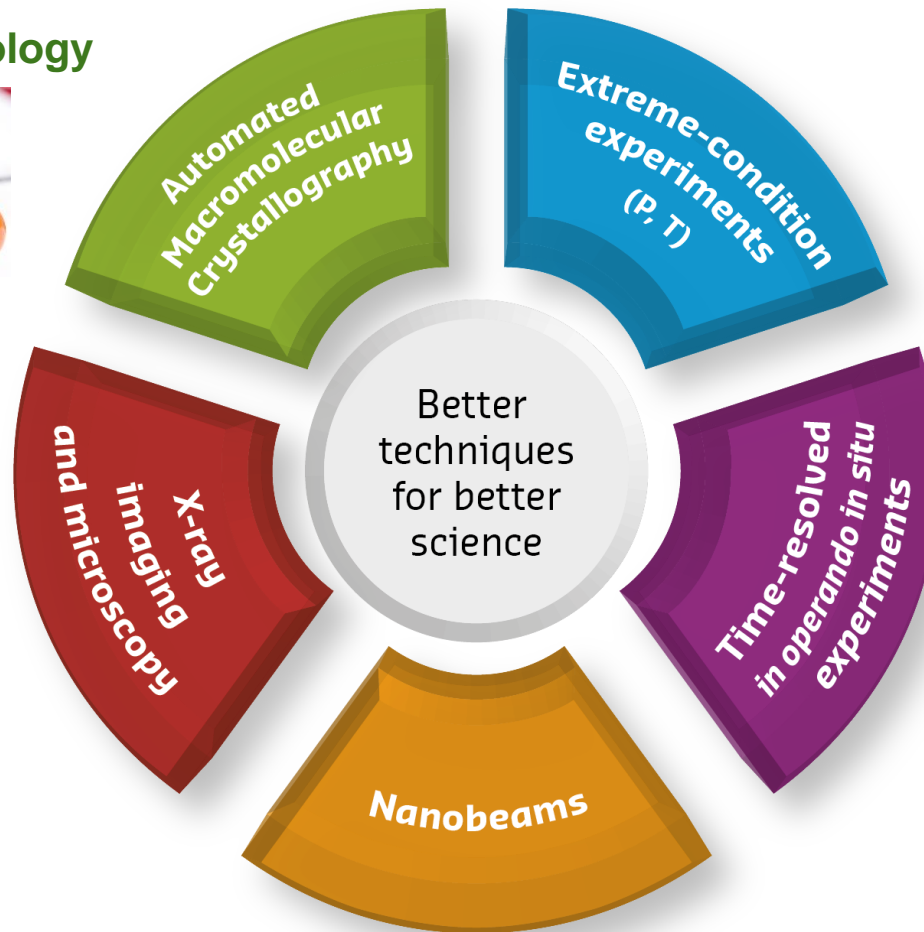
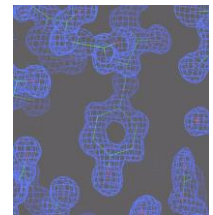
**Earth science,
New materials**



**Medicine,
Paleontology,
Cultural heritage**



**Chemistry,
Energy, Materials,
Ultra fast biology**



**Nanosciences
Information technology**



AN AMBITIOUS AND INNOVATIVE PROJECT: THE UPGRADE PROGRAMME

2009 Upgrade PHASE I – 180 M€

2015 In time and within budget

- Construction of 19 new-generation experimental stations to explore the nanoworld
- Creation of a new ultra-stable experimental hall
- Improvement and refurbishment of most of the cutting-edge scientific equipment and accelerator infrastructure

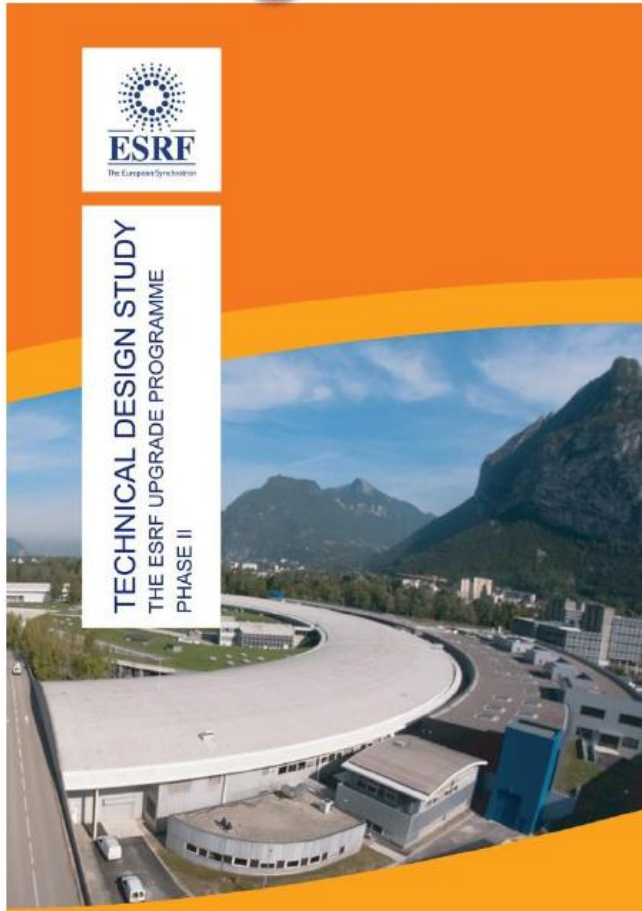
2015 Upgrade II ESRF-EBS – 150 M€

2022 Launched in June 2015

- Construction of a new storage ring, inside the existing structure, with performance increased by a factor of 100
- Construction of new state-of-the-art beamlines
- Ambitious instrumentation programme (optics, high-performance detectors)
- Intensified big data strategy

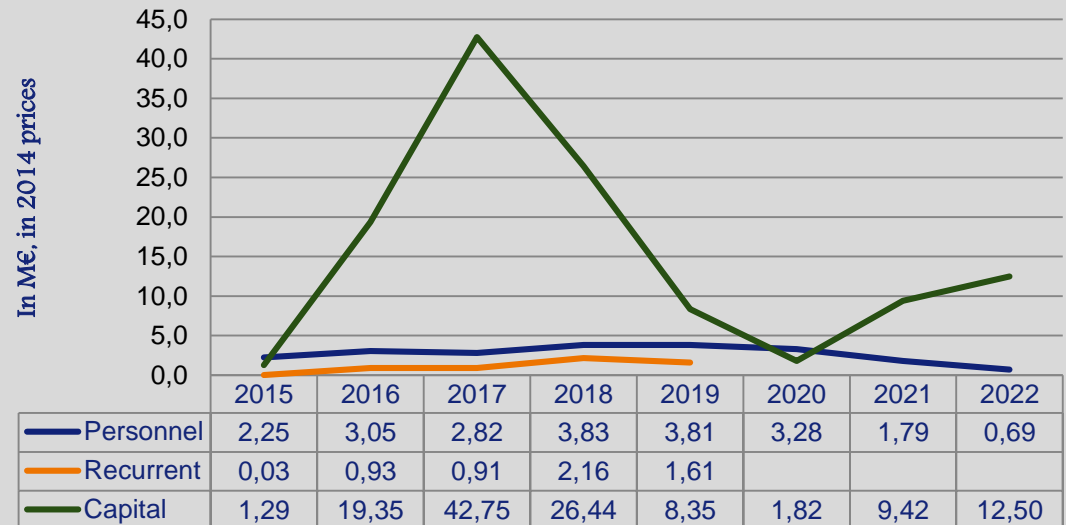


Orange Book



Total expenditure: 149.1 M€

ESRF-EBS :Expenditure by nature



TOTAL EXPENDITURE BY NATURE

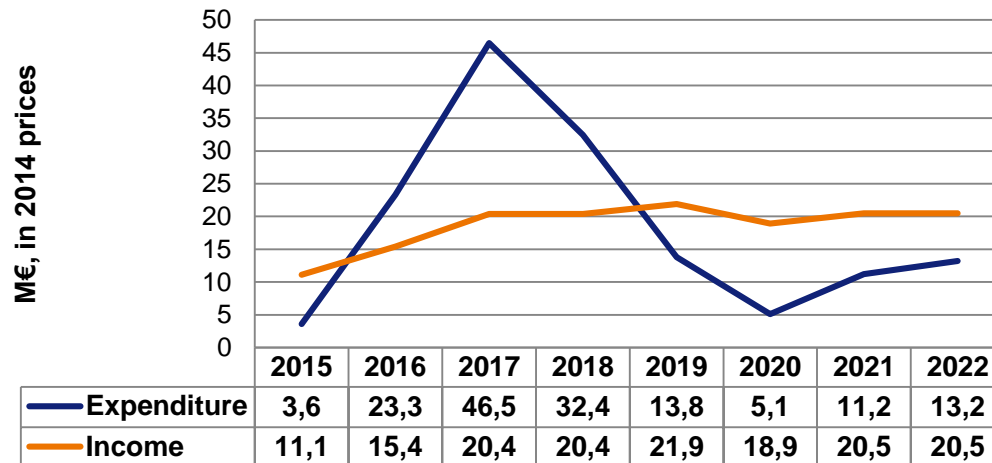
Personnel costs	2015–2022	21.6 M€
Recurrent costs	2015–2019	5.6 M€
Investments	2015–2022	121.9 M
TOTAL		149.1 M€

UP PHASE II/EBS INVESTMENTS: 121.9 M€

New storage ring	2015–2020	91.3 M€
Four new beamlines	2020–2022	19.5 M€
Instrumentation	2015–2022	8.6 M€
IT Hardware	2015–2022	2.5 M€

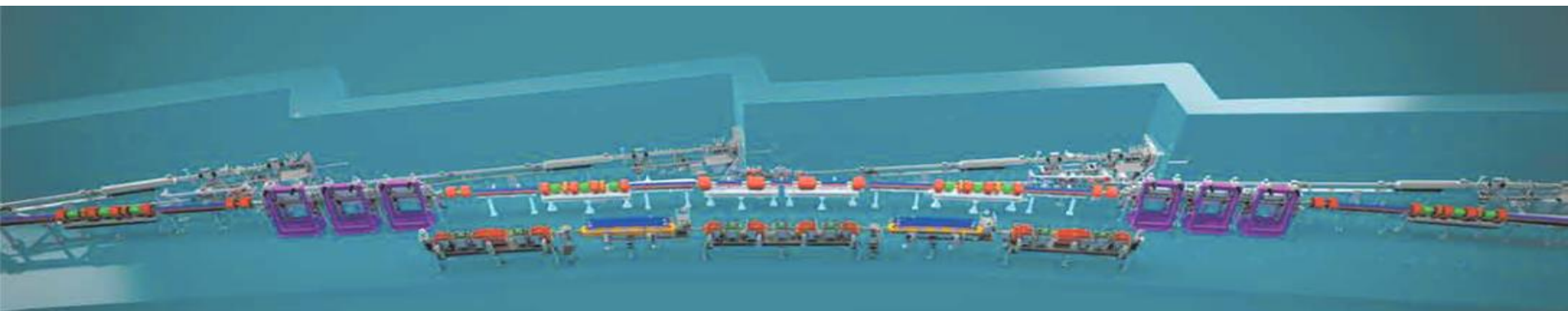
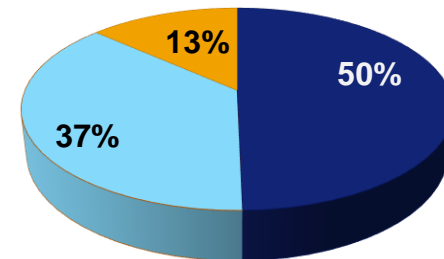
Total budget: 149.1 M€

ESRF-EBS expenditure & income profile



Financing sources

- Members' ad-hoc contributions
- Other Members' contributions
- Other incomes



EIB FINANCING: TIME SCHEDULE

	2014						2015											
	June	July-Aug	Sep.	Oct.	Nov.	Dec.	Jan.	Feb.	Mar.	Apr.	May	June	Sept.	Oct.	Nov.	Dec.		
. Approval of the EBS-Project by ESRF Council																		
. First contact with EIB																		
. Preparation of explanatory documentation on the Project																		
. (Long) Questionnaire from EIB filled in by ESRF																		
. 1-day ESRF visit to EIB Headquarters																		
. 2-day Visit at ESRF of EIB Members, from "Dept. Of Innovation and Competitiveness"																		
. Preparation and sending of additional information																		
. 1-day Visit at ESRF of EIB Programme Manager "InnovFin"																		
. Exchange and sending of additional information																		
. Evaluation process /EIB																		
. Approval of request by EIB Management Committee																		
. Approval of the request by EIB Management Board																		
. Contract negotiation																		
. Signature of the Contract on 11th December																		

- ☐ **65 M€ total financed (50 % of the Project financed by our Members).**
- ☐ **European banking instrument adapted to scientific and technical projects.**
- ☐ **EIB is perceived well by the Institutes which finance the ESRF.**
- ☐ **EIB enables a global and complete approach of our project.**
- ☐ **There is a high level of flexibility in the mechanism, which can adapt to the evolution of the project.**
- ☐ **The financial conditions match expectations in terms of cash management of the project cost envelope.**
- ☐ **The financial conditions are favourable.**

THANK YOU FOR YOUR ATTENTION

