

The Governance of CERN



Athens, April 2, 2014

Sergio Bertolucci

CERN's Director

for Research and Scientific Computing

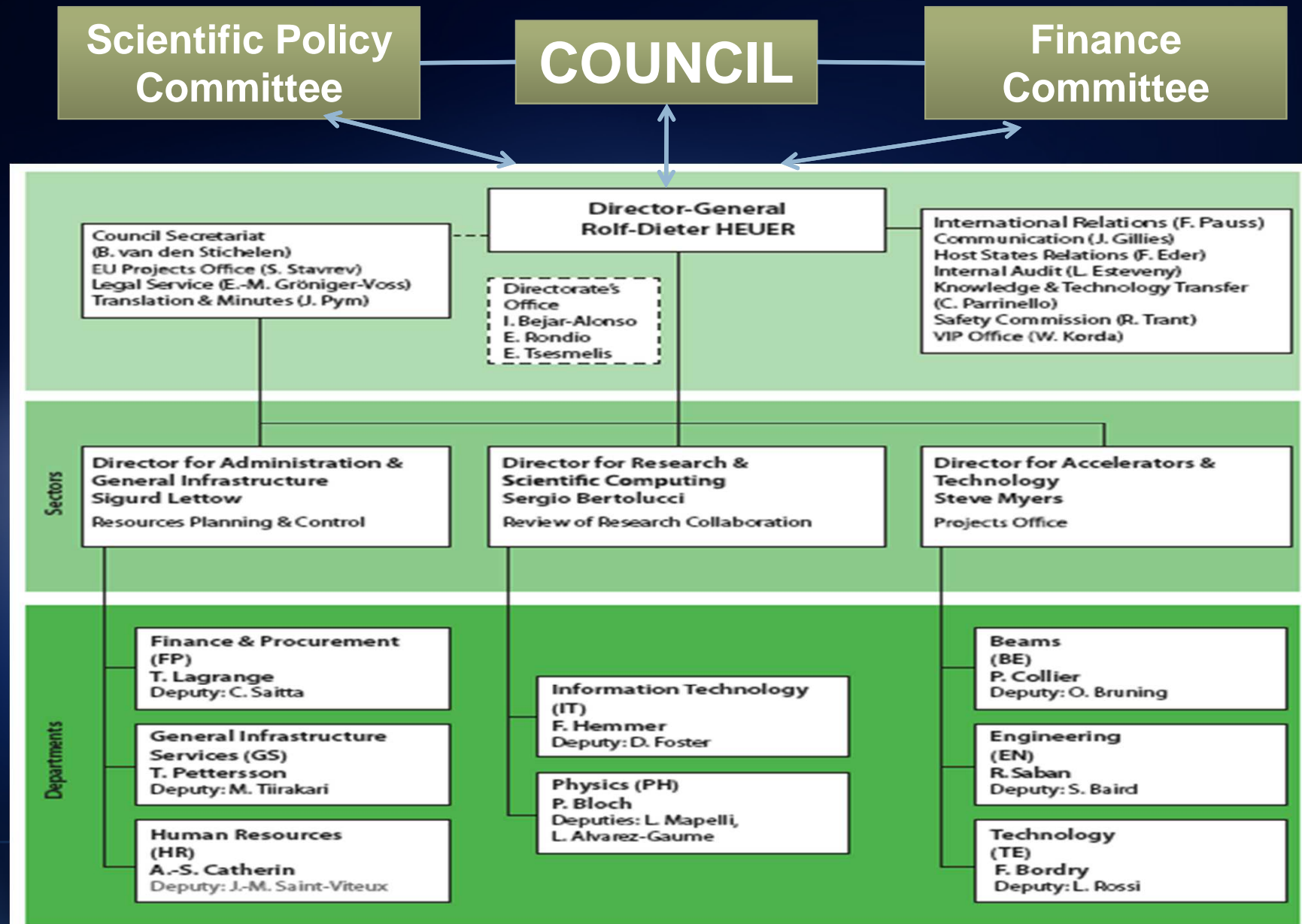
The Governance of CERN

Two complementary governance constructs deployed (formal Host Lab Convention vs. “loose” Experiment MoUs), in order to:

- Provide a **stable environment** for the realization of the science program
- Grant **autonomy** to the projects, while keeping an **unitary vision**.
- Establish the **independent evaluation bodies** and their **reporting lines**.

The **Scientific Community** is the **main driver** and the **last instance owner** of the Organization

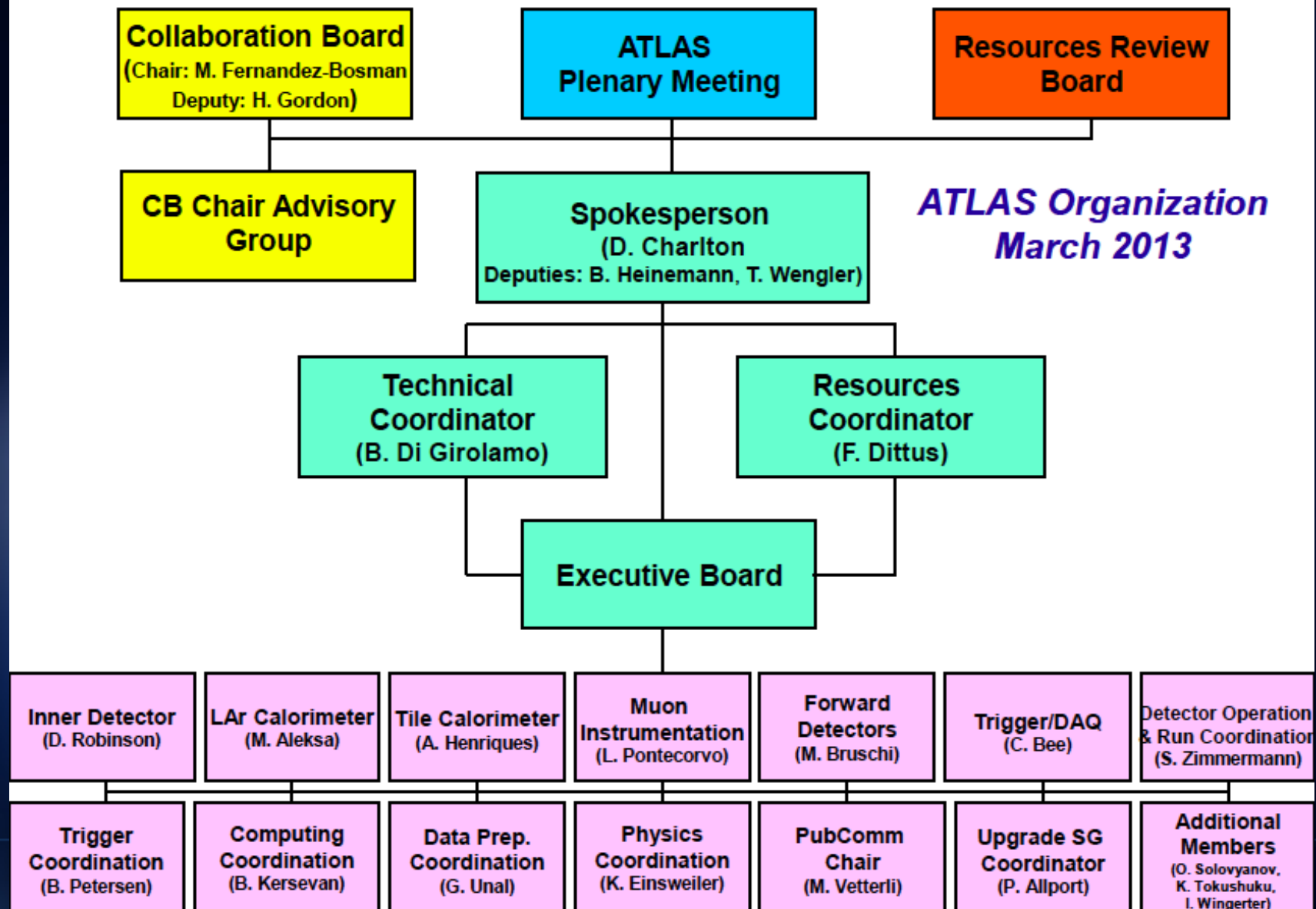
CERN Organization



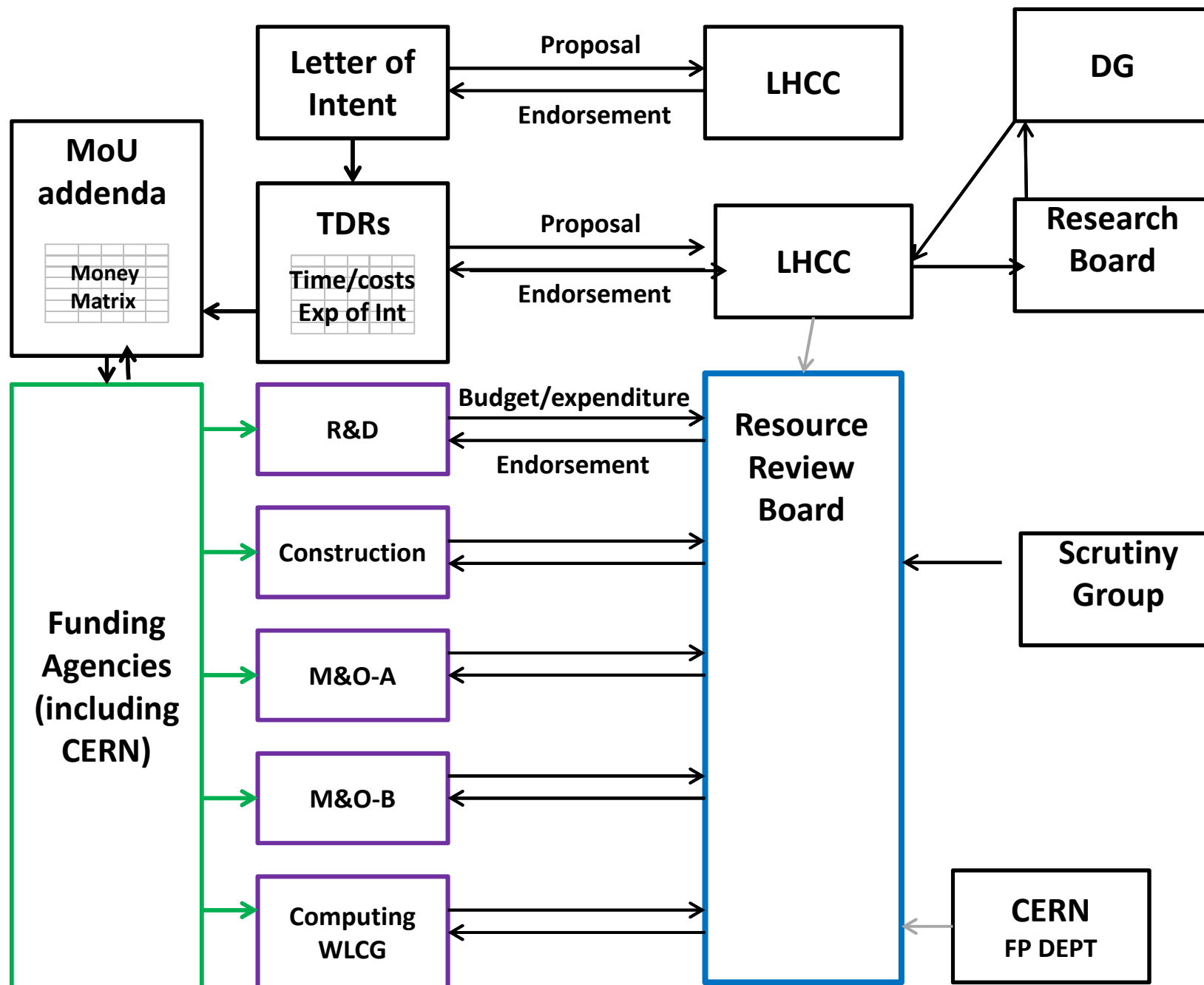
Council Mandate

- The Council shall, subject to the provisions of this Convention: **determine the Organization's policy in scientific, technical and administrative matters.** Since 2006 the Council establishes the **European Strategy for Particle Physics**;
- **approve the programmes of activities of the Organization**;
- **adopt**, by a two-thirds majority of Member States represented and voting, **the parts of the budget which apply to the different programmes** of activities and determine the financial arrangements of the Organization in accordance with the Financial Protocol annexed to this Convention;
- **review expenditures and approve and publish audited annual accounts** of the Organization;
- decide on the staff establishments required;
- publish an annual report or reports;
- have such other powers and perform such other functions as may be necessary for the purposes of this Convention.

,,,and a typical large experiment organization



Experiment approval and monitoring process



To conclude

- CERN is turning 60 this year.
- In this period it has grown to be the biggest and more globalized science organization worldwide and has achieved landmark scientific results.
- It represents a prime example of an European vision for a Knowledge Driven Society
- Its governance has played a primary role in granting long term stability, an inclusive environment and a strong connection to the wider society.

THANK YOU!