

Research Infrastructures for Global Challenges



Agnieszka Zalewska, IFJ PAN
President of CERN Council

ICRI 2014 Conference
Athens, 2-4 April 2014



CERN was founded 1954: 12 European States

“Science for Peace”

Today: 21 Member States

- ~ 2300 staff
- ~ 1600 other paid personnel
- ~ 10500 users

Member States: Austria, Belgium, Bulgaria, the Czech Republic, Denmark, Finland, France, Germany, Greece, Hungary, Israel, Italy, the Netherlands, Norway, Poland, Portugal, Slovakia, Spain, Sweden, Switzerland and the United Kingdom

Candidate for Accession: Romania

Associate Member in Pre-Stage to Membership: Serbia

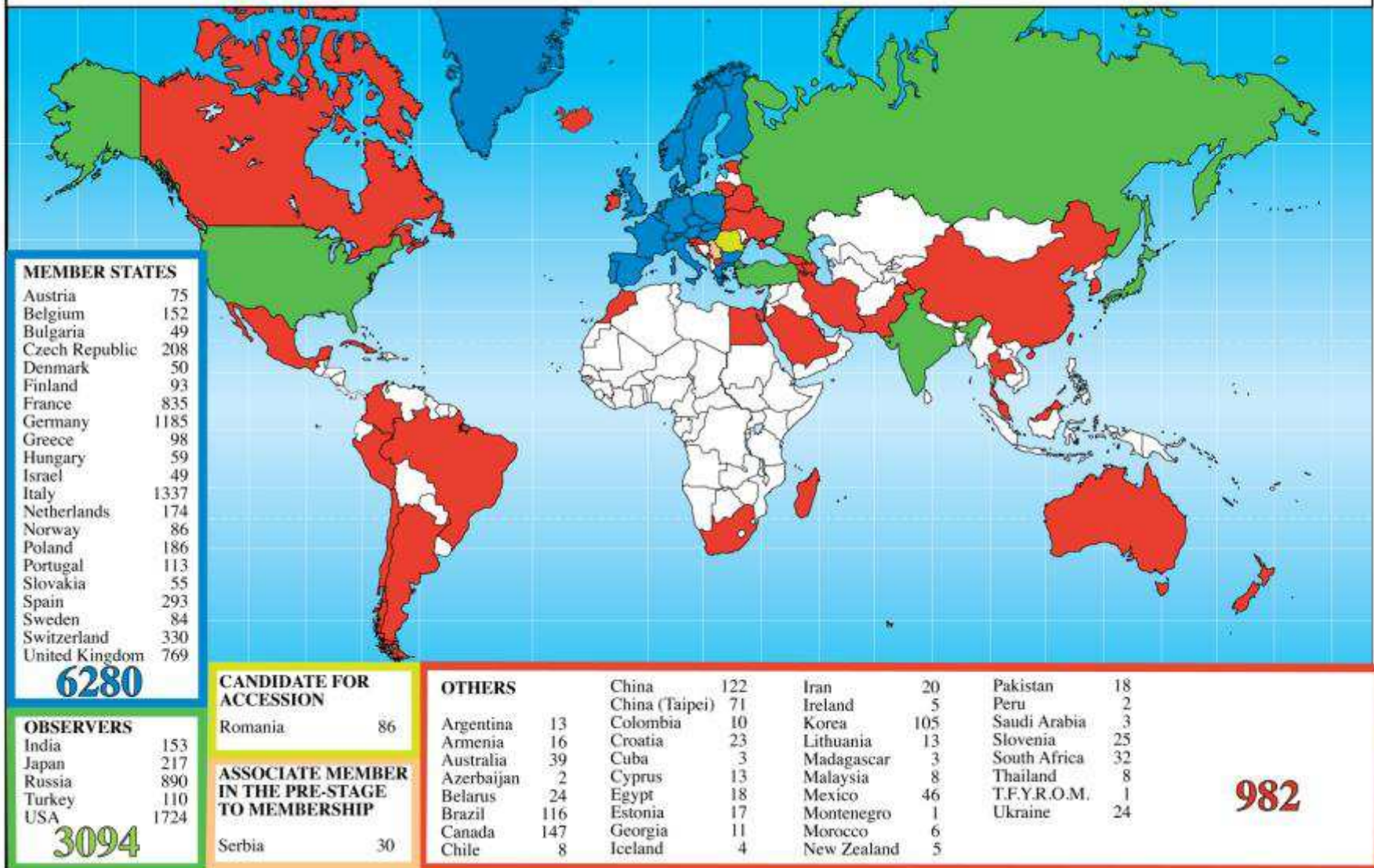
Applicant States for Membership or Associate Membership:
Brazil, Cyprus, Pakistan, Russia, Slovenia, Turkey, Ukraine

Observers to Council: India, Japan, Russia, Turkey, United States of America; European Commission and UNESCO



Science is getting more and more global

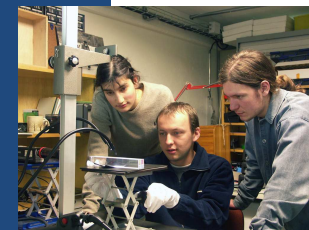
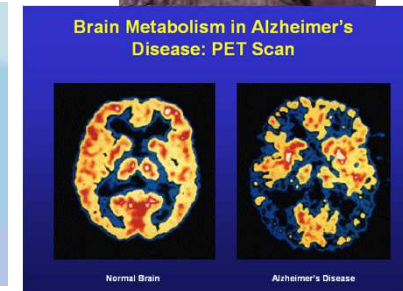
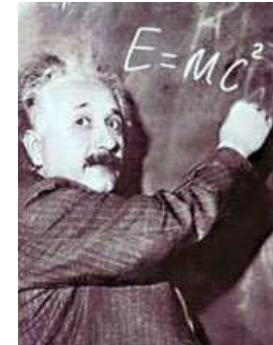
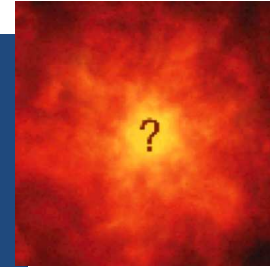
Distribution of All CERN Users by Location of Institute on 14 January 2014





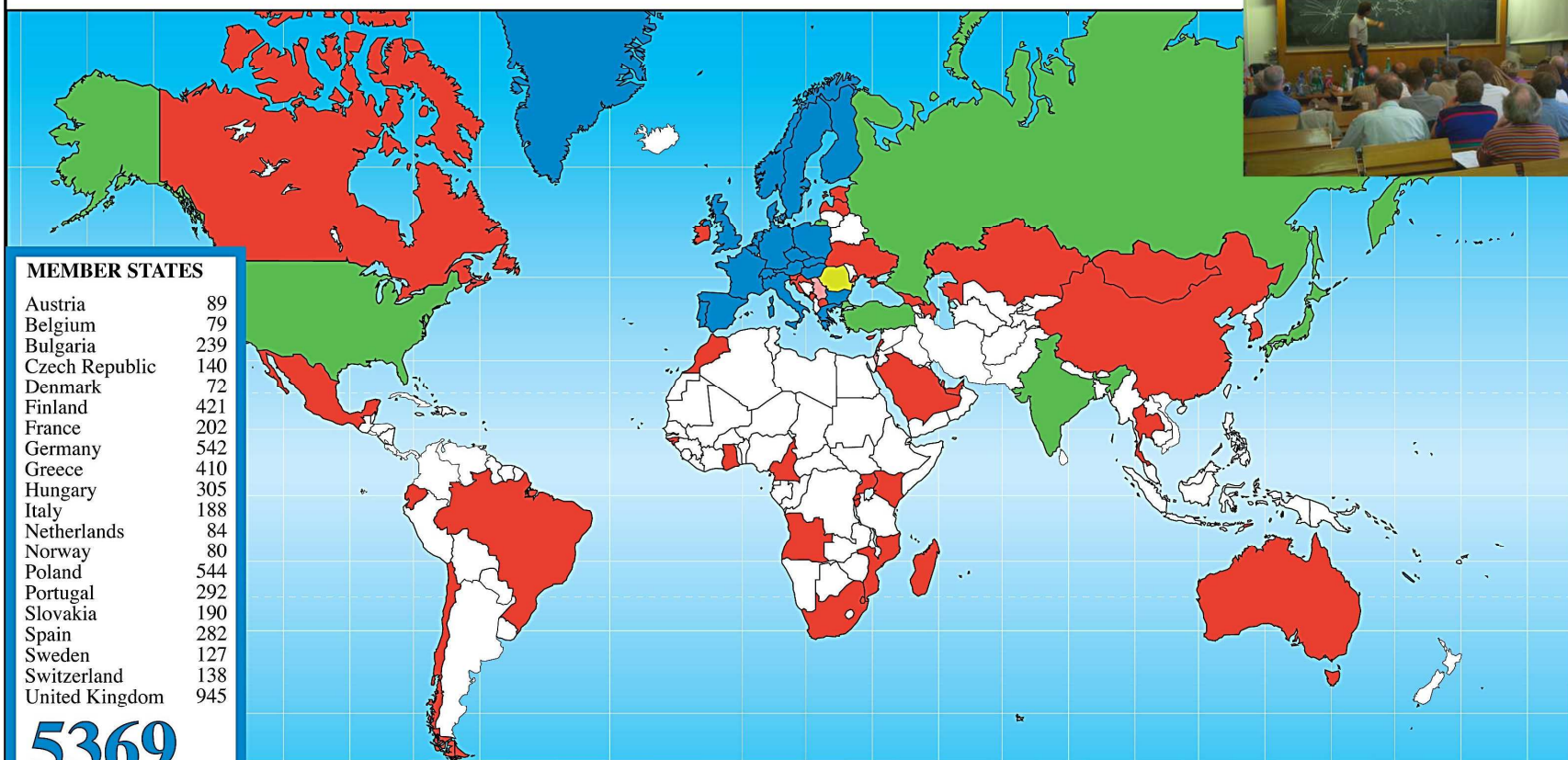
Mission of Research Infrastructures using CERN as an example

- ❑ **Research**
Push forward the frontiers of knowledge
- ❑ **Innovation**
Develop new technologies
- ❑ **Education**
Train scientists and engineers of tomorrow
- ❑ **Outreach**
Promote science in society
- ❑ **Unite** people from different countries and cultures



CERN Teacher Programme

Teacher Programme Participants 1998 - 2012



MEMBER STATES

Austria	89
Belgium	79
Bulgaria	239
Czech Republic	140
Denmark	72
Finland	421
France	202
Germany	542
Greece	410
Hungary	305
Italy	188
Netherlands	84
Norway	80
Poland	544
Portugal	292
Slovakia	190
Spain	282
Sweden	127
Switzerland	138
United Kingdom	945

5369

CANDIDATE FOR ACCESSION

Romania	11
---------	----

ASSOCIATE MEMBER IN THE PRE-STAGE TO MEMBERSHIP

Israel	4
Serbia	12

OBSERVER STATES

India	2
Japan	4
Russia	163
Turkey	3
USA	61

233

OTHERS

Angola	4
Australia	3
Azerbaijan	1
Brazil	83
Burundi	1
Cameroon	3
Canada	2
Cape Verde	3

Chile	3
China	1
Croatia	1
Cyprus	8
Ecuador	2
Estonia	35
Georgia	55
Ghana	6
Guinea Bissau	1
Ireland	3

Kazakhstan	3
Kenya	2
Latvia	1
Lebanon	1
Madagascar	2
Malta	36
Mexico	5
Mongolia	1
Montenegro	13
Morocco	2

Mozambique	17
Qatar	1
Rwanda	15
Sao Tome	3
Saudi Arabia	1
Singapore	2
Slovenia	21
South Africa	6
South Korea	44
Swaziland	1

Thailand	6
T.F.Y.R.O.M.	11
Timor-Leste	4
Uganda	1
Ukraine	57
U.A.E.	1

472





Key elements in CERN's success

- ❑ Ambitious scientific projects with defined deadlines
- ❑ Excellent scientists and engineers forming very creative environment
- ❑ Sustainable support of Member States
- ❑ Close collaboration with the MS research institutes and universities on one side and with leading industrial firms on the other side
- ❑ Promoting knowledge and technology transfer
- ❑ Opening to the world

