



eInventory

The European
eInfrastructures
Observatory
www.enventory.eu



The European eInfrastructures Observatory

www.e-observatory.eu | www.enventory.eu

eConcertation

Brussels, 06.03.2013

Jorge-A. Sanchez-P.

Project inventor





eInventory

The European
eInfrastructures
Observatory

www.enventory.eu

Initiatives

- GEANT/TERENA compendium
- e-IRG knowledge base
- CEENGINE knowledge base
- EuroRIs-Net+ knowledge repository
- EGI.eu databases and compendium
- TOP500 supercomputers
- RI-IMPACT study
- ERINA+ assessment
- e-FISCAL study
- and other initiatives...



e·nventory

The European
eInfrastructures
Observatory
www.enventory.eu

e·nventory

- Established the **European e·Infrastructures Observatory**
 - an online, single-entry-point platform
 - offering interactive, user-driven visualisation tools, and
 - an extensive set of benchmarking indicators
 - geographically addressing Europe to:
 - facilitate multidimensional and polymorphic monitoring and analysis
 - support fact-based policy and learning, and
 - disseminate achievements of e·Infrastructures in Europe and beyond



e·nventory

The European
eInfrastructures
Observatory
www.enventory.eu

Current status

- Offers **7** **intuitive, interactive and user-friendly visualisation tools** based on best practices in visualisation and representation techniques
- Features a core set of more than **45** **benchmarking indicators** that are the baseline for **monitoring e·**Infrastructures development progress, usage, impact and investments
- Provides access to more than **12.000** individual figures and other related data and benchmarks
- Consolidates more than **18** **months** of **stakeholders' feedback and consensus** on the structure and functionality of a world-class **e·Infrastructures Observatory**



eInventory

The European
eInfrastructures
Observatory
www.enventory.eu

Numerical indicators

- **Performance/Capacity** (*What are we getting for what we pay?*)
 - **Networking infrastructure:**
 - NREN typical backbone capacity, direct IP connection to GEANT, IP access capacity
 - **Supercomputing infrastructure:**
 - National supercomputers maximum performance, peak performance, number of cores, number of processors, in the top500 list
 - **Grid infrastructure:**
 - NGI maximum performance, number of cores, number of processors, installed disk capacity, Number of Grid sites connected to the NGI
- **Usage/Utilisation** (*How many users are utilising/accessing it?*)
 - **Usage:**
 - NREN IP traffic from external networks, NREN backbone congestion index, National supercomputers core hours, NGI core hours, NGI number of jobs
 - **Users:**
 - Researchers, R&D personnel, Teaching staff in tertiary education, Teaching staff in secondary education, Students in tertiary education, Students in secondary education
- **Cost/Budget** (*How much are we paying for it?*)
 - NREN budget, National supercomputers cost of ownership, NGI budget



eInventory

The European
eInfrastructures
Observatory
www.enventory.eu

Numerical indicators

- **Other indicators**
 - **Scientific Impact:**
 - Patent applications, Publications, Citations
 - **Digital Agenda:**
 - Fixed broadband penetration, Mobile broadband penetration, Regular internet users, Population who have never used the internet, Fixed broadband internet connection charge, Fixed broadband internet monthly subscription, International commercial internet bandwidth
 - **Horizon 2020:**
 - Gross domestic expenditure on R&D, Total unemployment rate
- **Supporting:**
 - Gross domestic product, Gross domestic product per capita, Gross enrolment ratio, Population, Surface area



eInventory

The European
eInfrastructures
Observatory
www.enventory.eu

Non-numerical indicators

- Stakeholders Mapping: **43 NRENs, 41 NGIs, 59 Supercomputing centres** and **4 Pan-European coordinating entities** with information provided in 7 attributes (country, logotype, full name, abbreviation, website, address, description)
- Pan-European Networks : **GEANT network backbone links** and **Cross-border fibre connections, memberships.**
- Chronology: establishment of **NRENs, NGIs, Supercomputers, major projects**, other milestones.



e-nventory

The European
eInfrastructures
Observatory

www.enventory.eu

The observatory is public

www.e-observatory.eu

The screenshot shows the e-nventory Home Page in a Firefox browser window. The page features the e-nventory logo and name at the top left. Below it is a 'Welcome' section with a paragraph of text. To the right of the welcome text is a large circular diagram with eight nodes connected by lines. The nodes are: 'Chronology' (dark grey), 'Pan-European Networks' (light grey), 'Stakeholders Mapping' (purple), 'Indicators on Maps' (yellow-green), 'Trends' (green), 'Treemaps' (green), 'Build Your Own Index' (green), and 'Project Information' (dark grey). Below the welcome text are two circular icons: 'Project Information' (with an 'i' icon) and 'User Guide' (with a person icon). At the bottom of the page is a footer with copyright information and a list of links: 'Contact | User Guide | Indicators | Glossary | Terms of Use | Acknowledgments'.

Firefox

e-nventory Home Page

e-nventory
The European
eInfrastructures
Observatory
www.enventory.eu

Welcome

Welcome to the European e-Infrastructures Observatory, an on-line platform, offering several interactive and user-driven visualisation tools and an extensive set of benchmarking indicators to facilitate multidimensional and polymorphic monitoring/analysis, support fact-based policy/learning and disseminate achievements of electronic and digital infrastructures in Europe. Enjoy!

Project Information

User Guide

Chronology

Pan-European Networks

Stakeholders Mapping

Indicators on Maps

Trends

Treemaps

Build Your Own Index

Copyright © 2010-2012 e-nventory. All Rights Reserved.
[Contact](#) | [User Guide](#) | [Indicators](#) | [Glossary](#) | [Terms of Use](#) | [Acknowledgments](#)



eInventory

The European
eInfrastructures
Observatory

www.enventory.eu

The Stakeholders Mapping service

Stakeholders Mapping

Type

- ☒  National Research & Education Networks
- ☒  National Grid Initiatives
- ☒  Supercomputer Centers
- ☒  Pan-European Coordinating Organisations

Regions/Country Groupings

All countries

Country [select all | none]

All 43 countries selected

Update Map





e·nventory

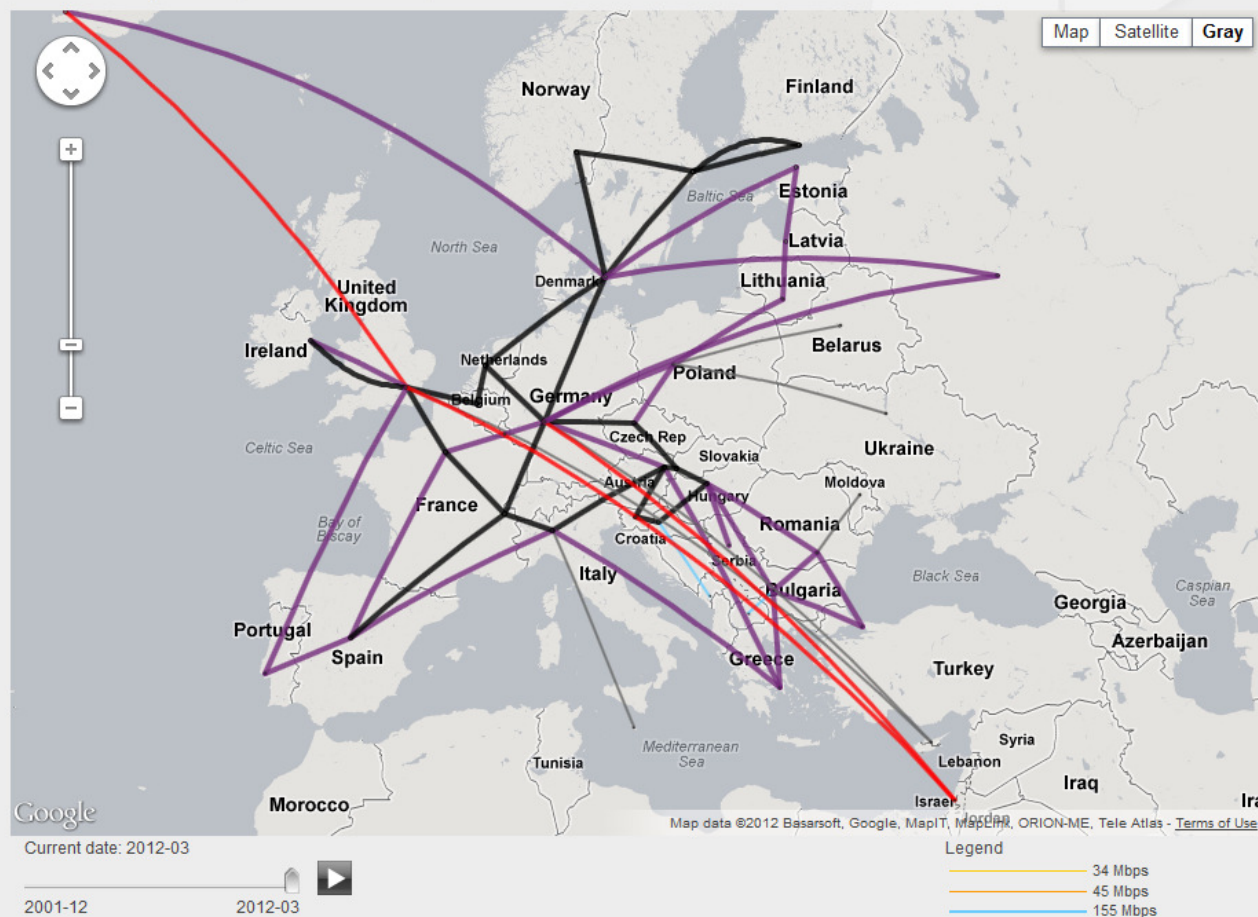
The European
eInfrastructures
Observatory

www.enventory.eu

The *Pan-European Networks* Mapping service

Pan-European Networks

Select Community/Network: **GEANT Network**



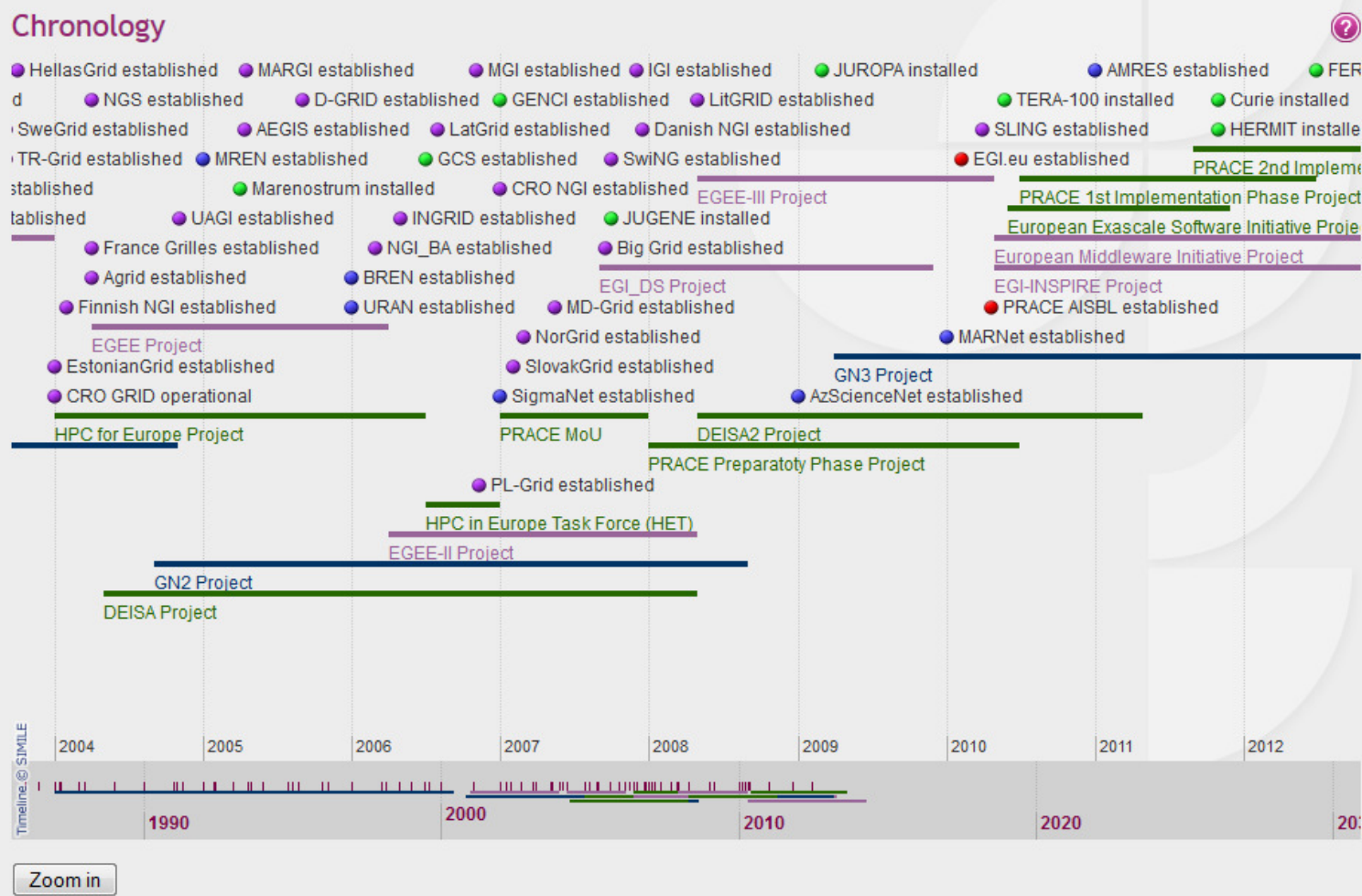


eInventory

The European
eInfrastructures
Observatory

www.enventory.eu

The *Chronology* service

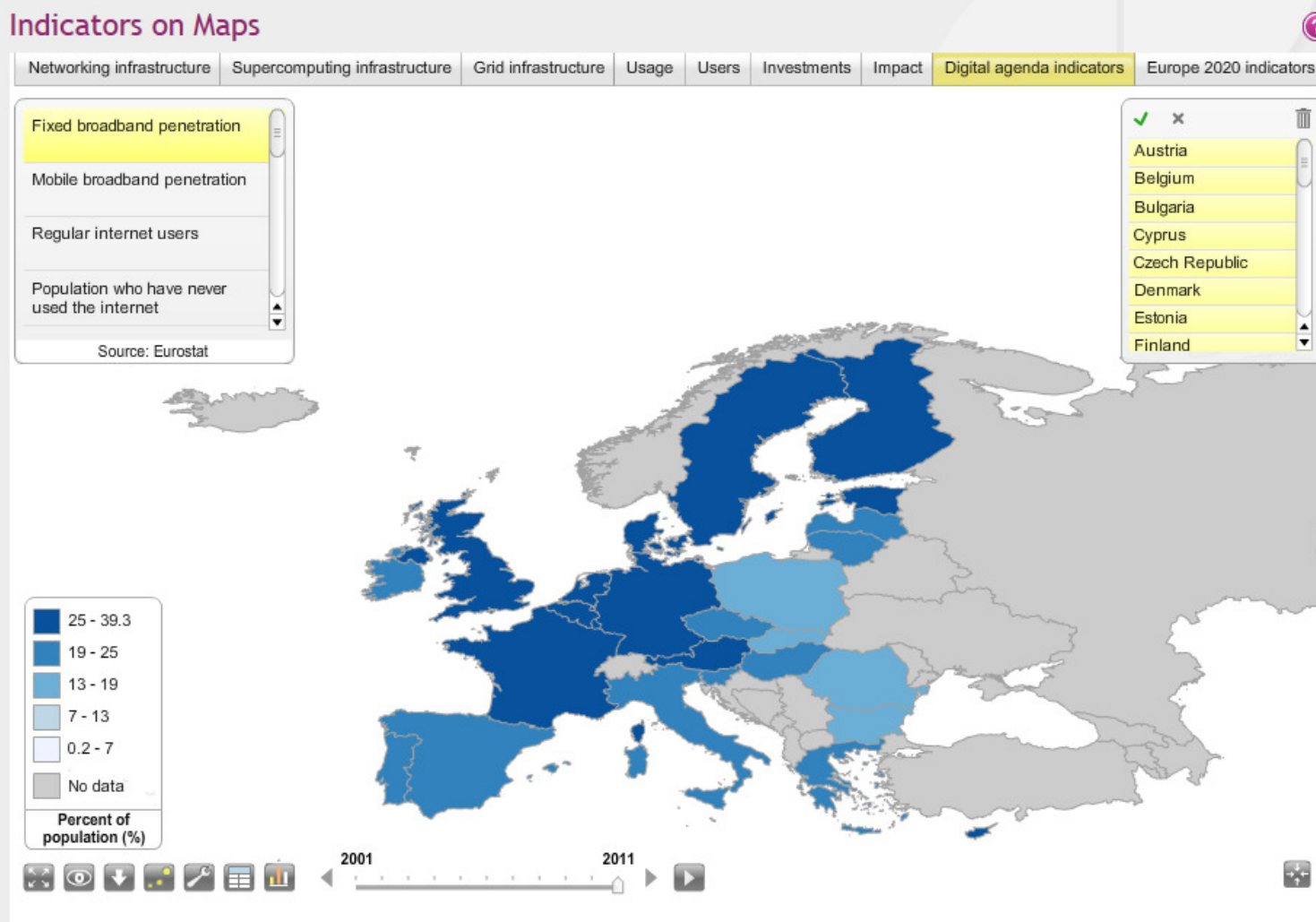




eInventory

The European
eInfrastructures
Observatory
www.enventory.eu

The *Indicators on Maps* service





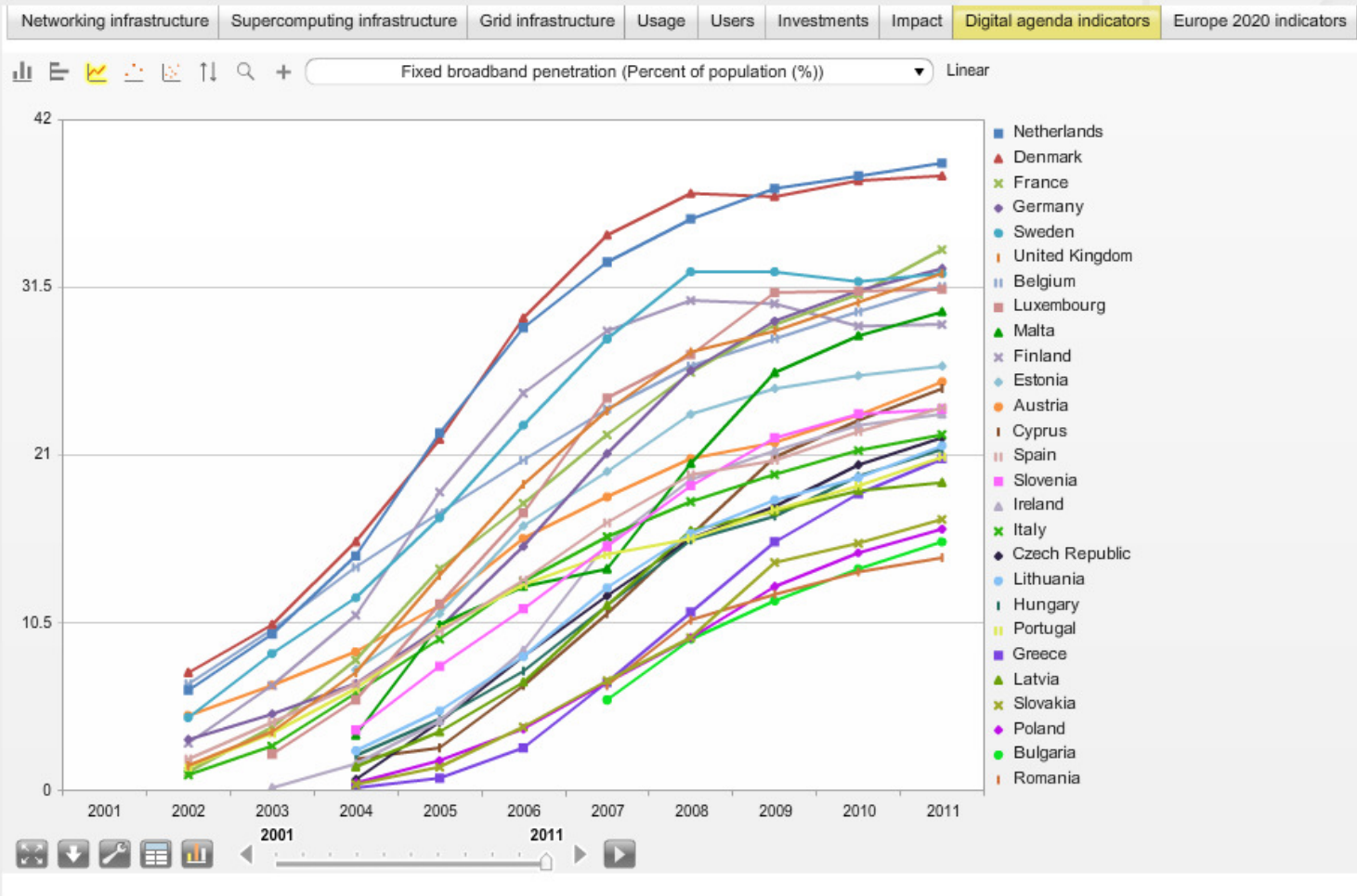
eInventory

The European
eInfrastructures
Observatory

www.enventory.eu

The *Trends* service

Trends





eInventory

The European
eInfrastructures
Observatory
www.enventory.eu

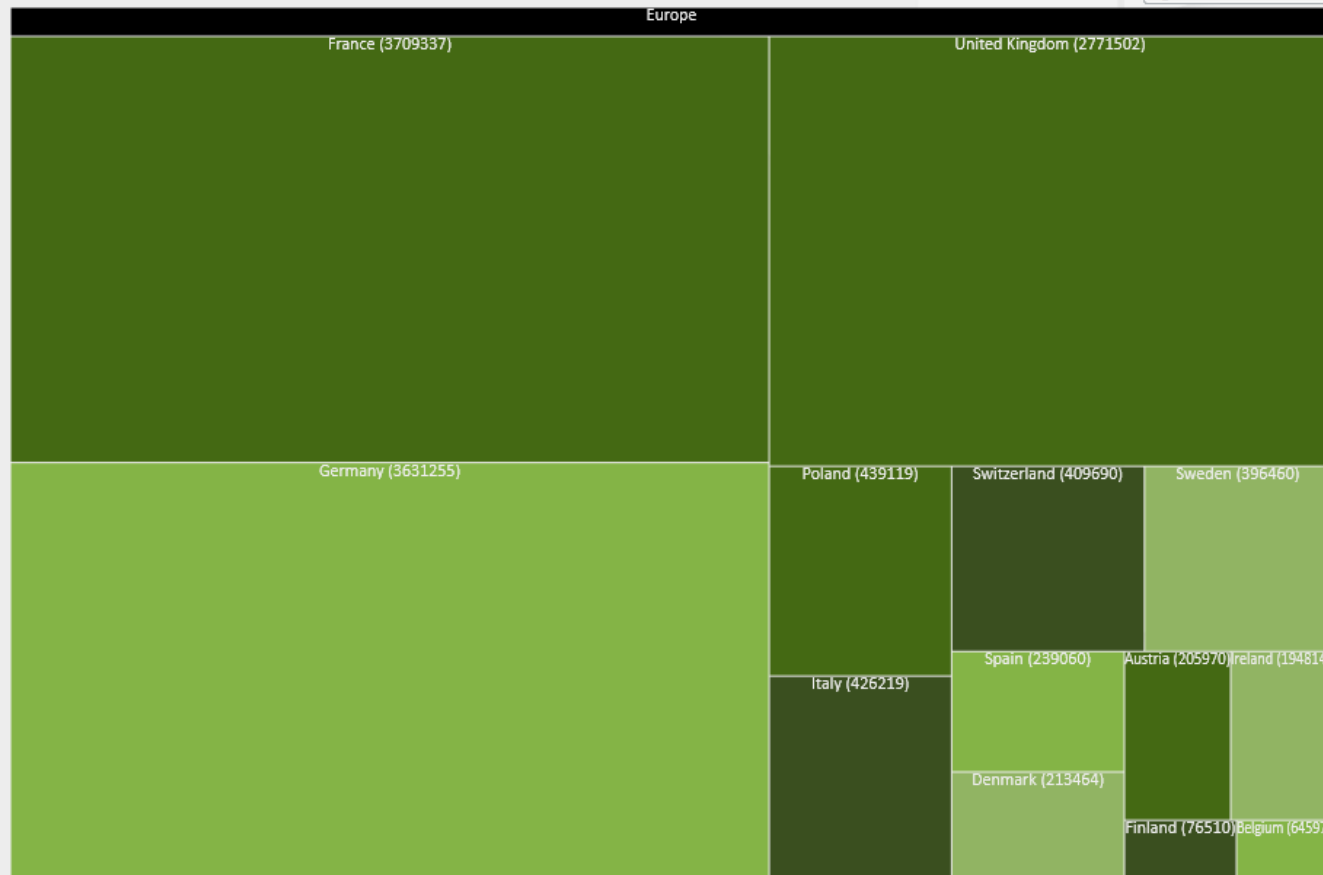
The *Treemaps* service

Treemaps

Select Indicator: Year:

Click on an area to view details, right-click on an area or press the button to go back one level.

[go back one level](#)





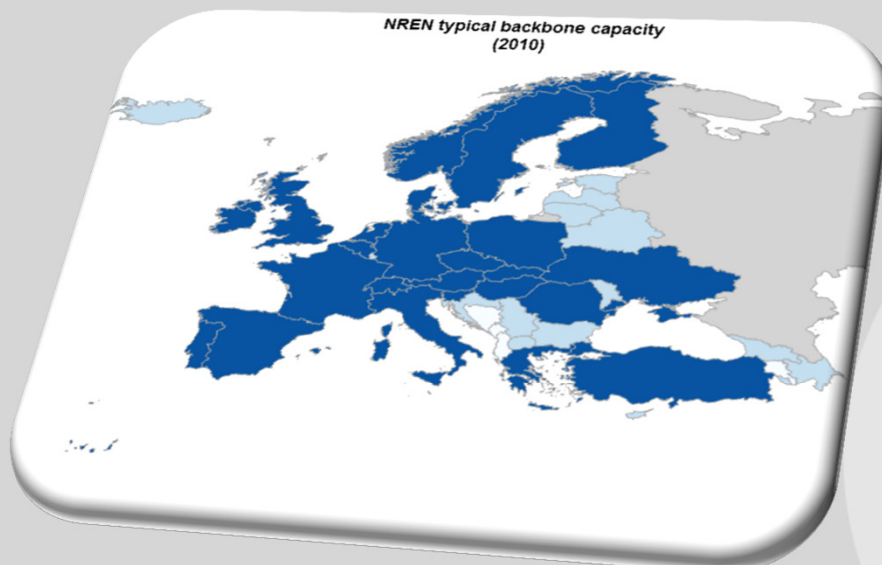
eInventory

The European
eInfrastructures
Observatory

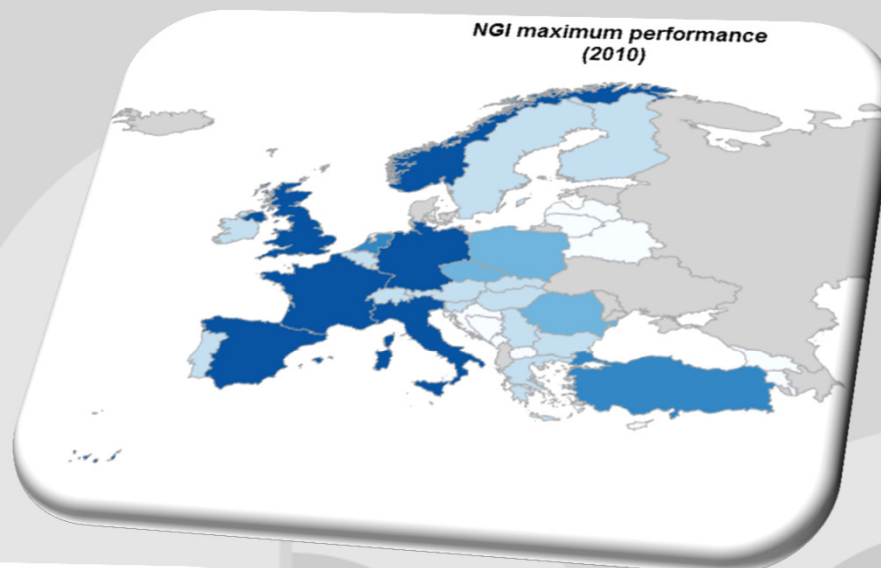
www.enventory.eu

Networking, Supercomputing & DCI

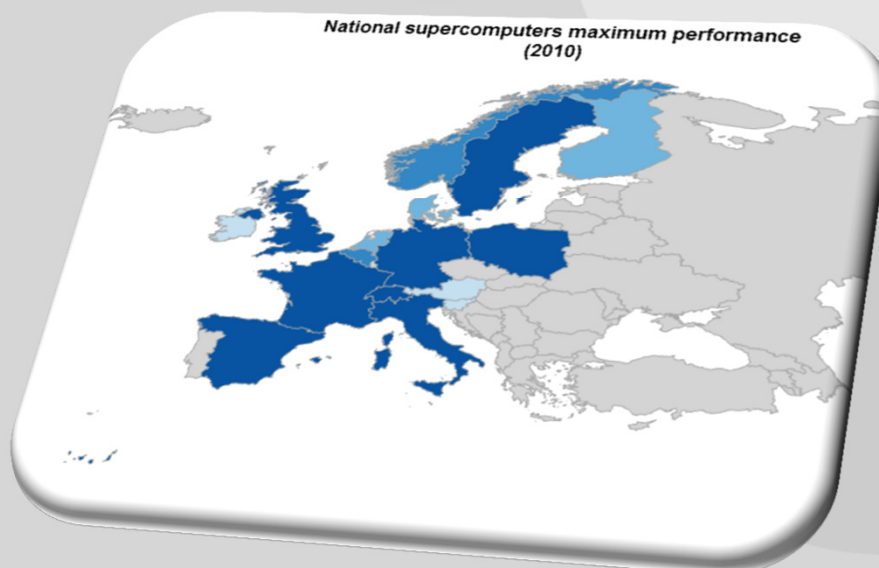
*NREN typical backbone capacity
(2010)*



*NGI maximum performance
(2010)*



*National supercomputers maximum performance
(2010)*





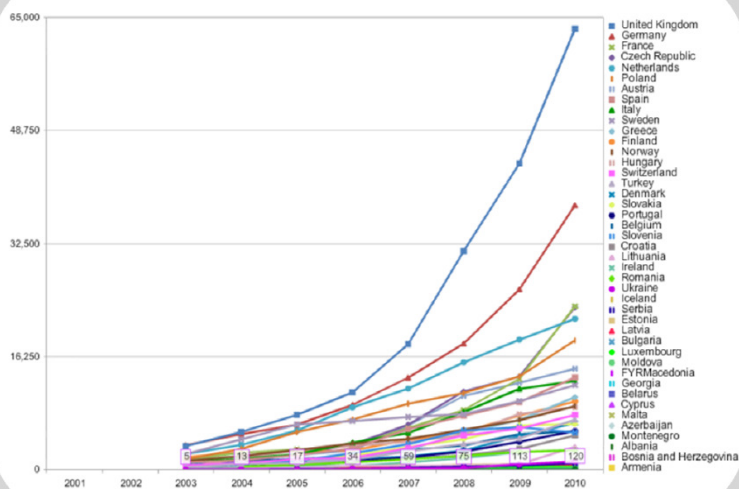
eInventory

The European
eInfrastructures
Observatory

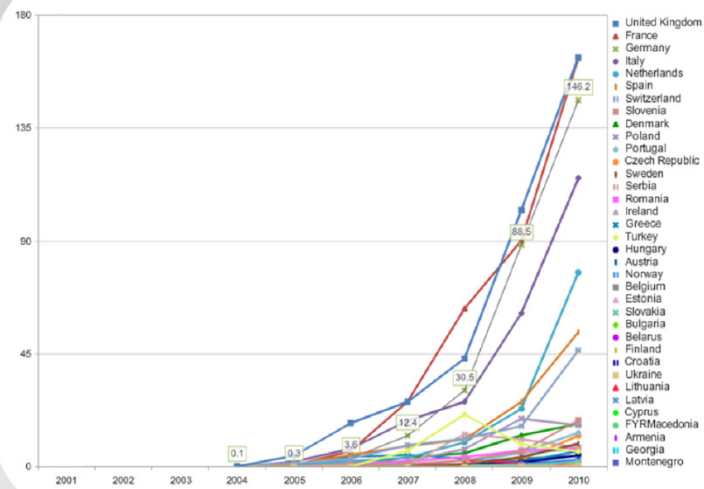
www.enventory.eu

Usage vs. Users vs. Budget

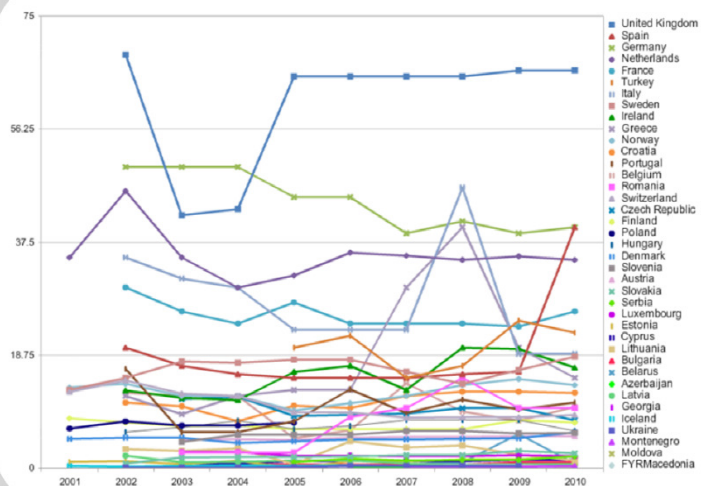
NREN IP traffic from external networks (Terabytes)



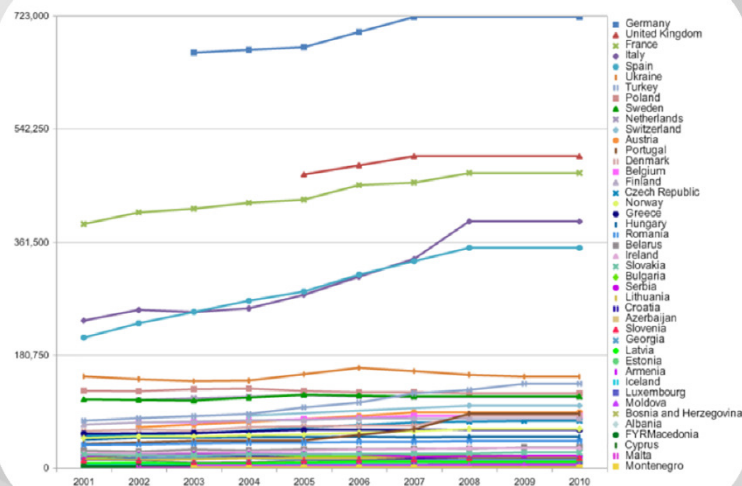
NGI core hours (million)



NREN budget (Euros (millions))



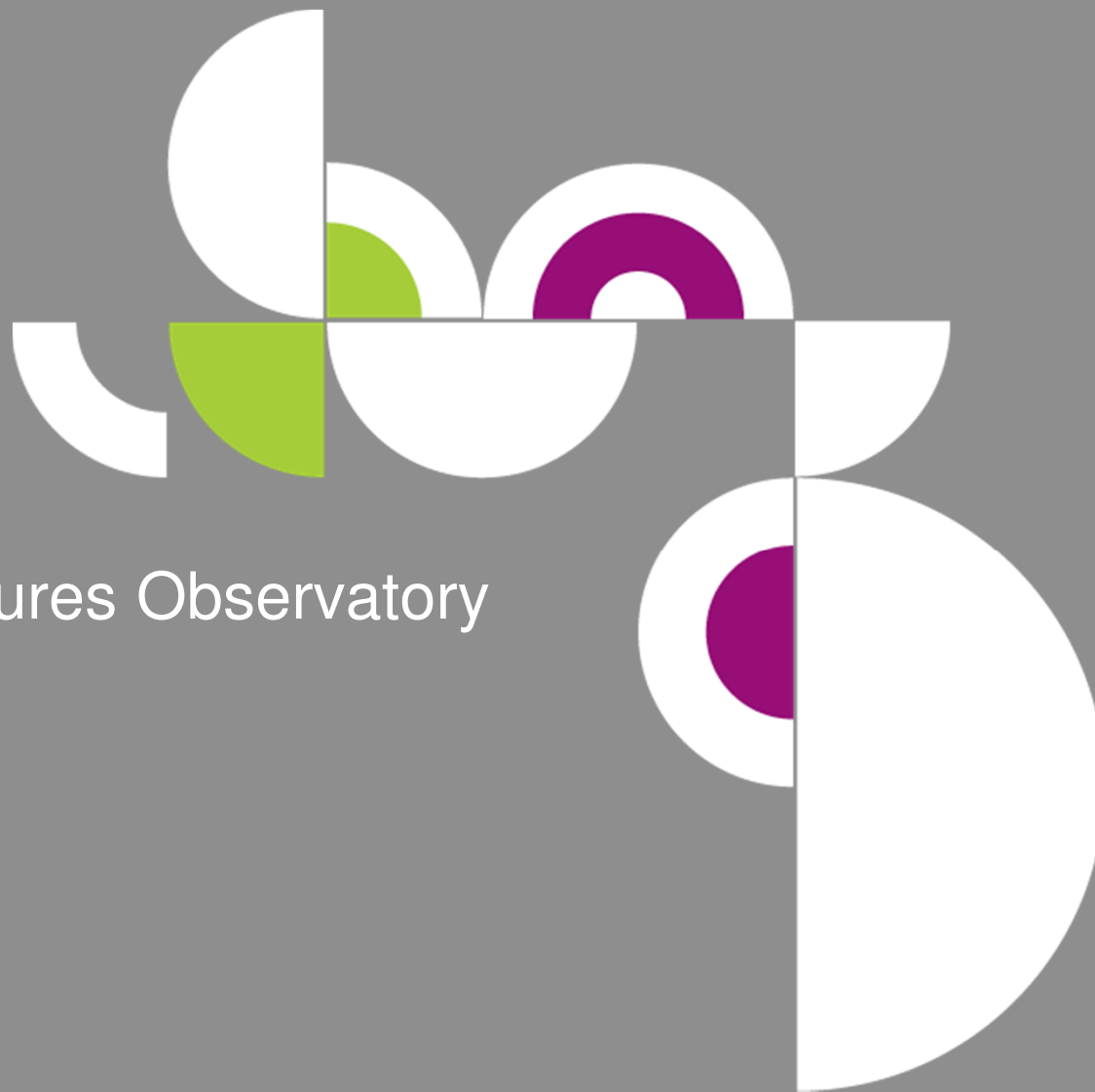
R&D personnel (Head Count)





e·nventory

The European
eInfrastructures
Observatory
www.enventory.eu



European **e·**Infrastructures Observatory
the future



eInventory

The European
eInfrastructures
Observatory
www.enventory.eu

The Roadmap

- **The Commission and e-Infrastructure policy bodies** shall explore possibilities how to support a holistic framework for monitoring e-Infrastructures development, capitalising on and expanding the results of the European e-Infrastructures Observatory, to:
 - **Cover global regions** of interest where significant e-Infrastructures actions are taking place and/or international cooperation initiatives have been supported by the EU;
 - **Address emerging e-Infrastructures** and related initiatives that will be key enablers of the European Digital Agenda 2020, such as data infrastructures, cloud computing and broadband access initiatives;
 - **Standardise and automate data harvesting** and repository processes, in a manner interoperable with existing data repositories, in order to support updating as new data becomes available at the data source;
 - **Deploy novel visualisation tools and techniques** for representing the development of new e-Infrastructures themes, revealing Pan-European as well as Trans-Continental collaborations and impacts of e-Infrastructures that are key enabling pillars of international e-Science.

The Roadmap

- **The Commission** should facilitate consultation and consensus processes at a global level towards the establishment of a global e•Infrastructures Observatory via the engagement of international e•Infrastructures experts, representing both regions of interest as well as themes of interest.
- **Running flagship e•Infrastructure initiatives/projects** should strengthen the collection and aggregation of data values for selected indicators, through a systematic and well-defined framework, for each of the e•Infrastructure fields (networking, DCI, HPC, etc.) by the organisations/structures that coordinate the respective initiatives (e.g. DANTE/TERENA, EGI.eu, PRACE AISBL, etc); wherever possible this process should build up a time series including past events.
- **The Commission and National Governments** should pursue a holistic approach for consistently applying data validation/curation to ensure that the collected data accurately represent the e•Infrastructures status quo.

The Roadmap

- **The Commission** should ensure that future flagship e•Infrastructure initiatives/projects incorporate appropriate monitoring and assessment procedures according to relevant indicators suitable for the long-term e•Infrastructures assessment and benchmarking, which if not in the project proposal should be incorporated into projects at the project negotiation phase.
- **The Commission** should pursue, in close cooperation with **National Governments**, its efforts to support the maintenance and update of a European e•Infrastructures Observatory to keep up-to-date with the on-going developments in this field at international level.
- **Major e•Infrastructure stakeholders** should facilitate, in close cooperation with **pan-European coordinating organizations and national bodies**, the collection of indicators in two emerging, important aspects of the development of European e•Infrastructures: sustainability and human capacity of e•Infrastructures. In neither case is there any information gathered consistently at present, if at all.



e·nventory

The European
eInfrastructures
Observatory
www.enventory.eu

Call you to

- Use the **European e·Infrastructures Observatory** and provide feedback
 - www.e-observatory.eu
- Provide feedback on the **Copenhagen e·Infrastructures Observatory White Paper - *Towards a European strategy for an e·Infrastructures Observatory***



e·nventory

The European
eInfrastructures
Observatory
www.enventory.eu



Thank you for your attention!

The European **e·**Infrastructures Observatory has been developed by the **e·nventory** project, co-financed by EU's 7th Framework programme for R&D under Grant Agreement no RI-261554.

The **e·nventory** project acknowledges the invaluable support and contribution of its Advisory Board and the following European flagship **e·**Infrastructures initiatives and coordinating organisations: GEANT, DANTE, TERENA, EGI.eu, PRACE

Dr.-Ing. Jorge-A. Sanchez-P.

E: info@enventory.eu, T: +30.211.850.1843, F: +30.211.800.1843





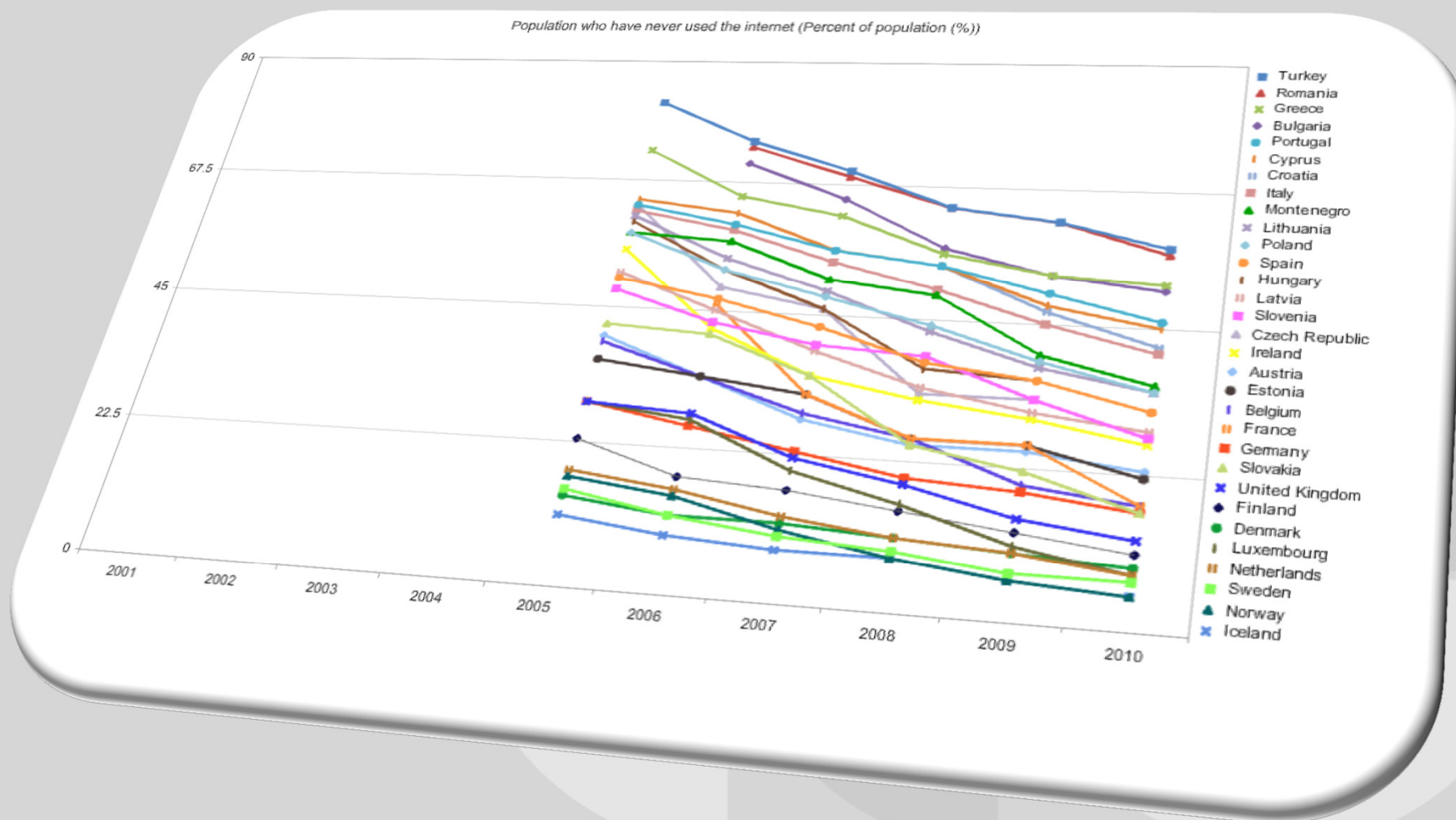
eInventory

The European
eInfrastructures
Observatory

www.enventory.eu

Surroundings (1/4)

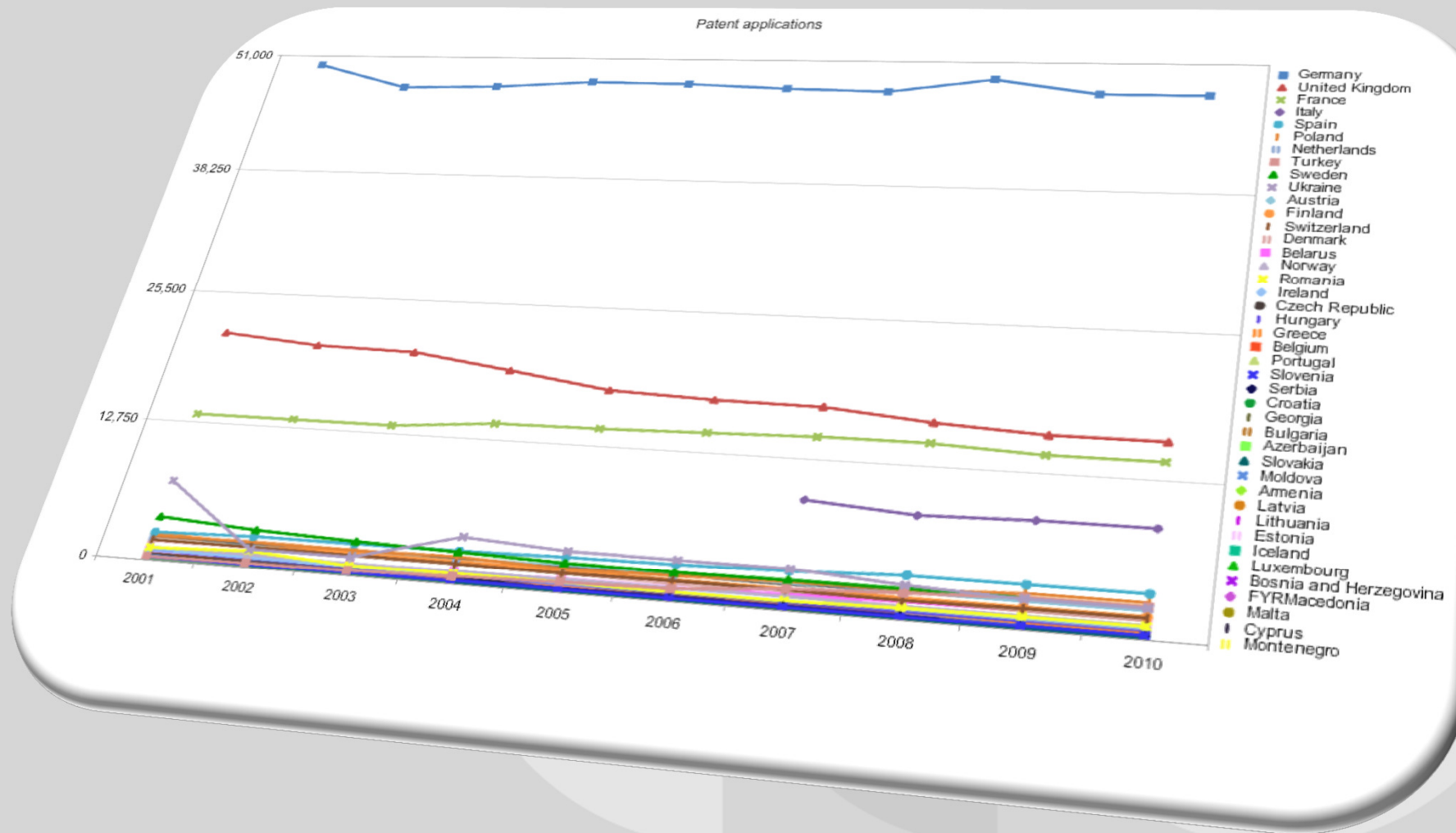
Population who have never used the internet





www.enventory.eu

Patent applications





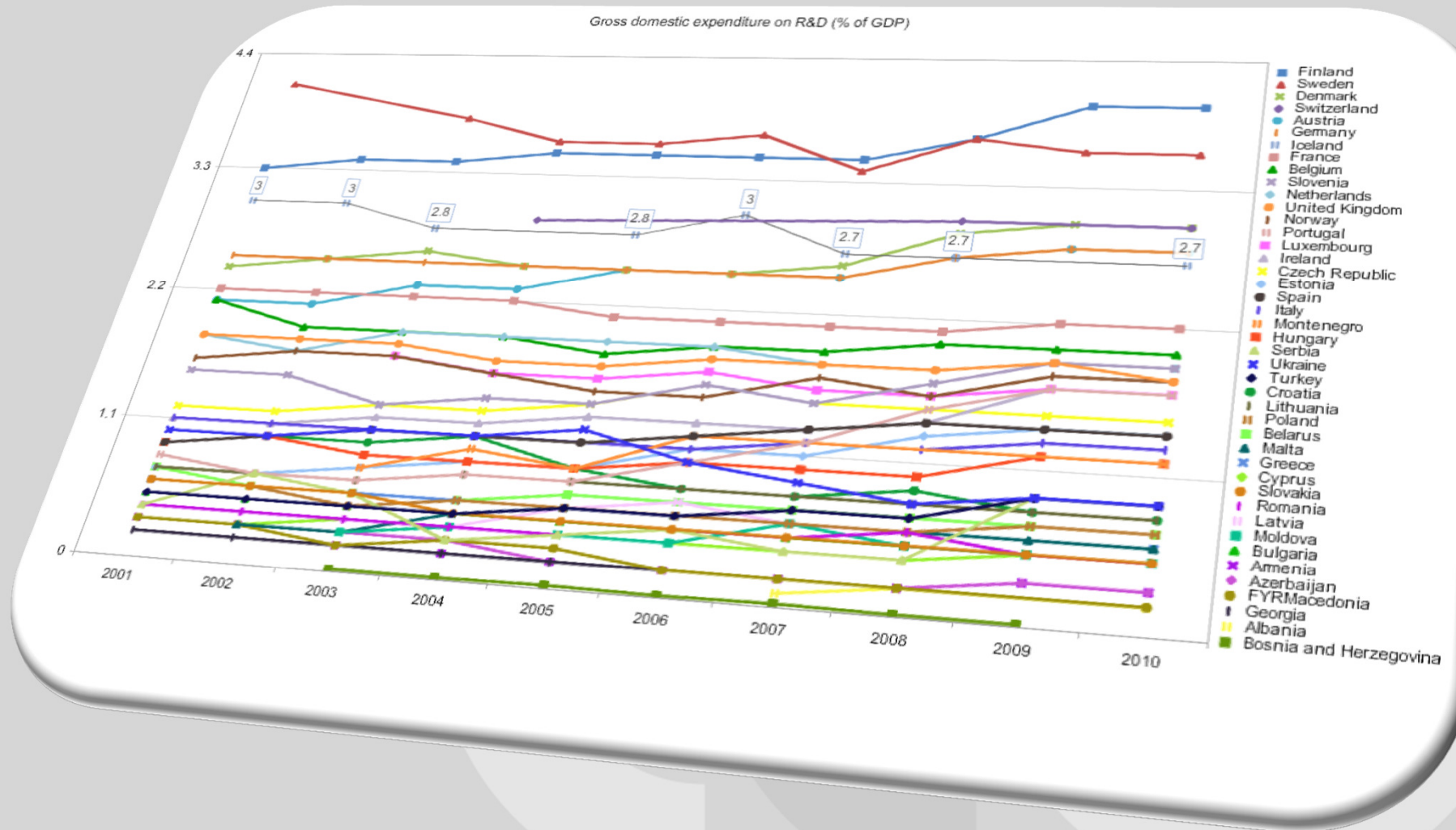
e·nventory

The European
eInfrastructures
Observatory

www.enventory.eu

Surroundings (3/4)

Gross domestic expenditure on R&D





eInventory

The European
eInfrastructures
Observatory

www.enventory.eu

Surroundings (4/4)

Publications vs. GDP

