



Research and development (R&D)

Academy of Finland

Research funding

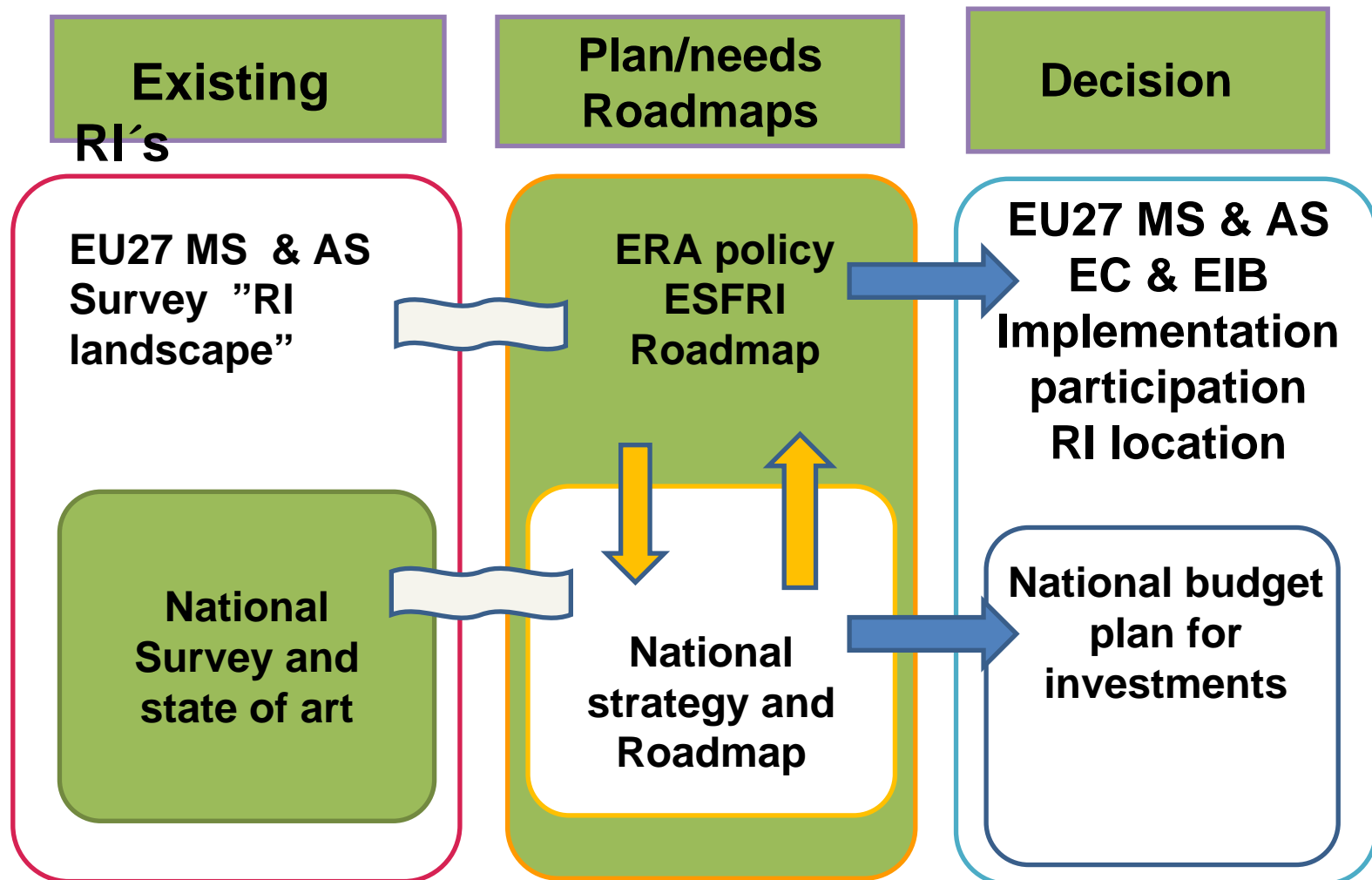
Application procedure and processing of applications

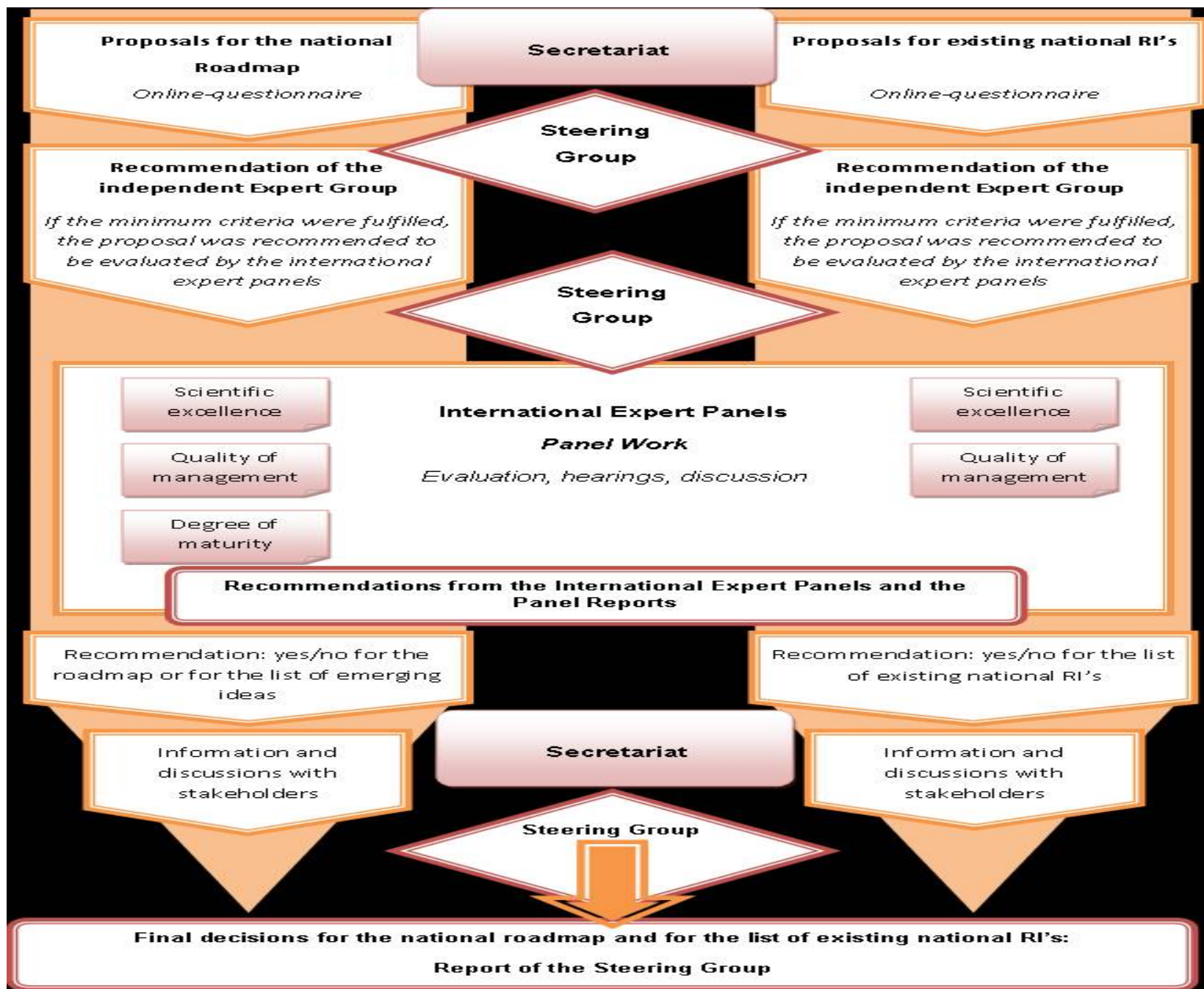
Funding decisions

NCP network in the light of ESFRI Roadmap implementation

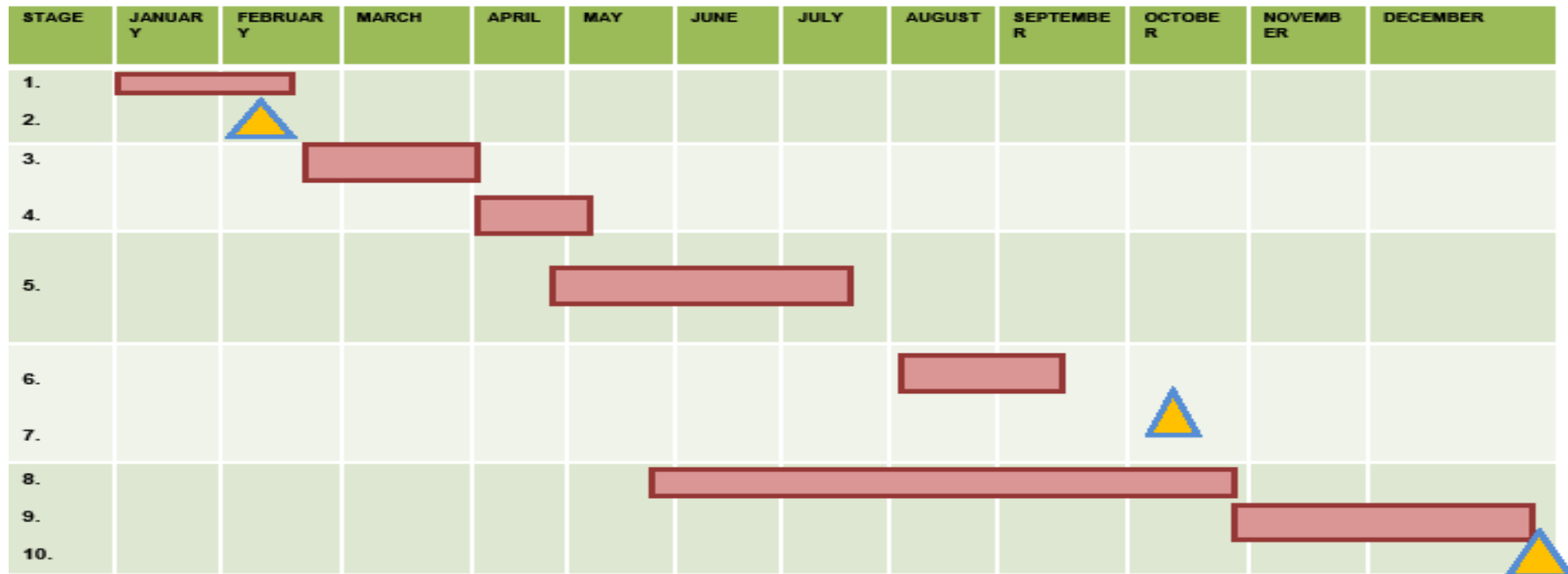
Eeva Ikonen, Paris December 2008

Research Infrastructures





Roadmap timeschedule



1. Planning the work in the Steering Committee
2. Seminar for Finnish contacts of the first ESFRI projects
3. Preparation of the Online Survey
- 4.the Online Questionnaire is open
- 5.Analysing the Survey Results
- 6.Working period of expert panels, site visits

7. Hearings
8. Working for the report
9. Working for the final report
10. Publishing the results

Panels (Acronym)	Number of proposals in the panels		Number of submitted RIs		Number of panel members
	Existing RIs	RI Roadmap	Existing RIs	RI Roadmap	
Life Sciences and Medicine & Environmental Sciences (LME)	21 +1 *)	24	76	50	8
Physical Sciences, e- Science and Engineering (PSE)	10+8 *)	18	58	33	7
Social Sciences and Humanities (SSH)	14	9	38	26	7
Joint evaluations	7	7	11	15	
Total *) int.nat. membership	52 + 9*)	58	183	124	22

	project	Countries (Official) commitment	Countries Support/interest and/or non-leading participation (including preparatory phase)
SSH	CESSDA	NO	AT CZ DK FI FR DE GR HU IT PT RO SI ES SE UK CH USA
	CLARIN	RO NL	AT BG CZ DK EE FI FR DE GR HU IT LV MT PL PT RO ES SE NO
	DARIAH		BG CY DK FR DE GR IE SI NL
	ESSurvey SHARE	NL NO	BE BG EE FR DE HU IT LV PL PT SI ES SE UK IS IL CH AT BE CZ DK FR DE GR IE IT PL SI ES NL IL CH USA
ENV	AURORA BOREALIS		BE BG FI DE RO UK NO RUS
	EMSO		FR DE GR IE IT PT ES SE UK NO TK
	EUFAR		FI FR DE GR IT PL PT RO ES UK
	EURO ARGO		BG FR DE GR IE IT PL PT ES UK NO
	IAGOS		FR DE UK
	ICOS		BE CZ DK FI FR DE HU IT ES SE NL UK NO CH USA
	LIFEWATCH		BE DK FI FR DE GR HU IT PL RO SK SI ES SE NL UK NO
	EISCAT_3D		NO
	EPOS		RO NO
	SIAEOS	NO	
ENERGY	HIPER	UK	CZ FR DE GR IT PL PT ES RUS USA
	IFMIF		
	JHR	FR	CZ RO
	ECCSEL	NO	
BMS	EATRIS		DK FI FR DE GR IT SE NL UK NO
	BBMRI	NL AT	AT EE FI FR DE GR HU IE IT MT RO ES SE UK IS NO
	ECRIN		AT BE DK FI FR DE HU IE IT ES UK CH
	INFRAFRONTIER		CZ DK FI FR DE GR IT ES SE UK
	ELIXIR	EMBL	DK FI FR DE HU IT PL ES SE NL UK IS IL NO CH
	INSTRUCT	EMBL	CZ DK FR DE IT PT UK IL
	EU-OPENSREEN EuroBioImaging		NO PL NL
MATERIALS and ANALYTICAL	ELI	CZ HU	BG CZ DE GR IT LT PL PT RO ES UK USA
	ESRF UPGRADE	ESRF NO	UK
	ESSneutrons	HU ES SE	DK FR DE IT LV PL NL UK NO CH
	XFEL	DE HU IT PL ES SE UK CH RUS	DK FR GR SK NL
	ILL 20/20	ILL	UK
	EUROFEL (ex IRUV X-FEL)	IT	DE PL SE UK
	EMFL		NL
PHYSICS ENGINEERING	E-ELT	ESO (Phase B) NL	UK
	FAIR	DE IT PL RO SE IN RUS	AT FI FR IT ES UK
	KM3Net	GR IT NL	CY FR DE IE RO ES
	SKA	UK AUS ZA	FR DE IT ES NL USA
	SPIRAL2		BE BG CZ FR DE HU IT PL RO ES IL USA
	SLHC		CERN PL USA
	ILC		CERN USA
	PRINS	BE	FR IT NL
	CTA		PL
ICT	PRACE (ex HPC)		AT FI FR DE GR IT ES SE NL UK NO CH

Next step

Inclusion of a project on the Roadmap does not guarantee funding. It should be stressed that the Roadmap does not contain every conceivable project in which Finnish scientists might wish to be involved, the Roadmap rather concentrates on those projects of the highest strategic importance.

There are more research infrastructure proposals than it is possible to fund.

For this reason, there is a need for prioritization which projects on the roadmap might move into construction phase, long-term commitment or joining to international projects.

Future plans

A strategy should be developed for RI cooperation among the diverse agencies that work in the broad field of sciences and technology. RI projects need a mechanism for bringing in new partners (and new branches) under a joint or common management system. For example, some of the new RI initiatives may benefit from collaboration with existing RI or one of the new proposals. A trend towards integration, instead of fragmentation of initiatives working around the same themes, should be encouraged within the scientific community.

Finland as many other countries is still in a learning phase regarding the best practice in selecting the RI proposals with the highest potential for the national or for the ESFRI Roadmap, especially evaluation of multidisciplinary proposals.

Thank you for your attention

