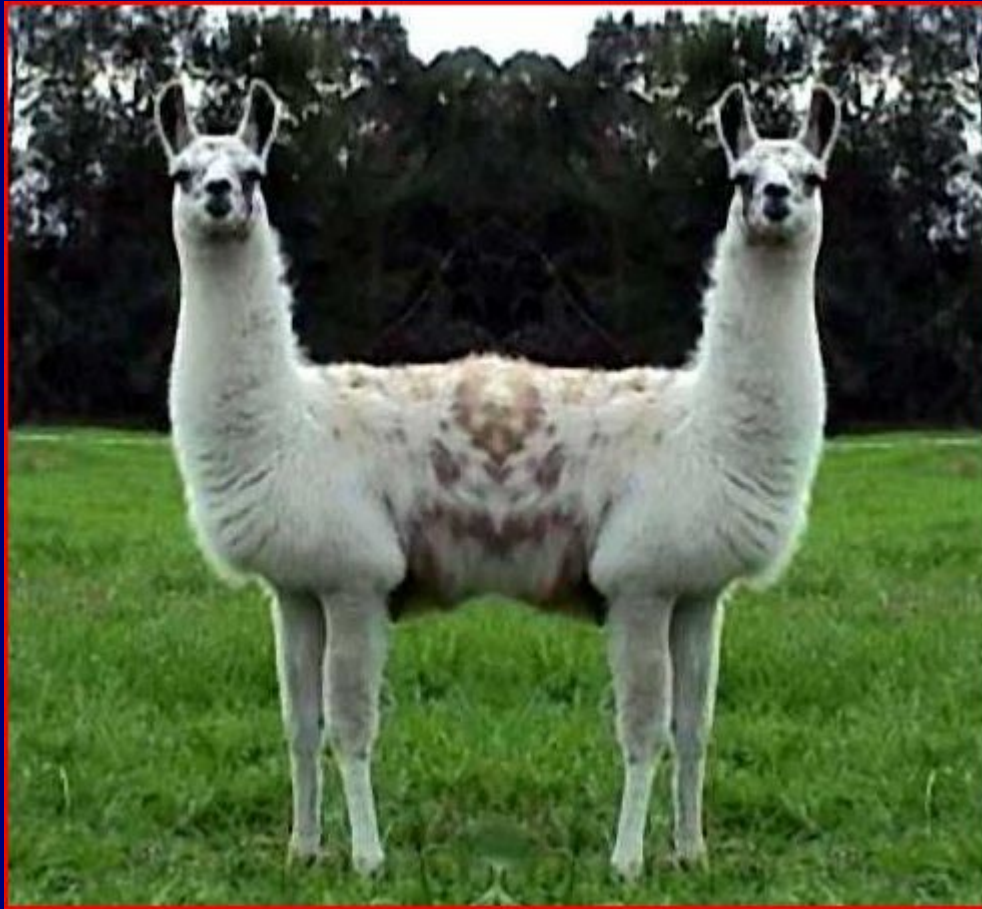




Regions and RIs: a Pushmi-pullyu

Graham Higley
Natural History Museum,
London

Definitions: Pushmi-pullyu



- an 'antelope' which has two heads at opposite ends of the body - when it tries to move, both heads try to go in opposite directions

Source: Wikipedia

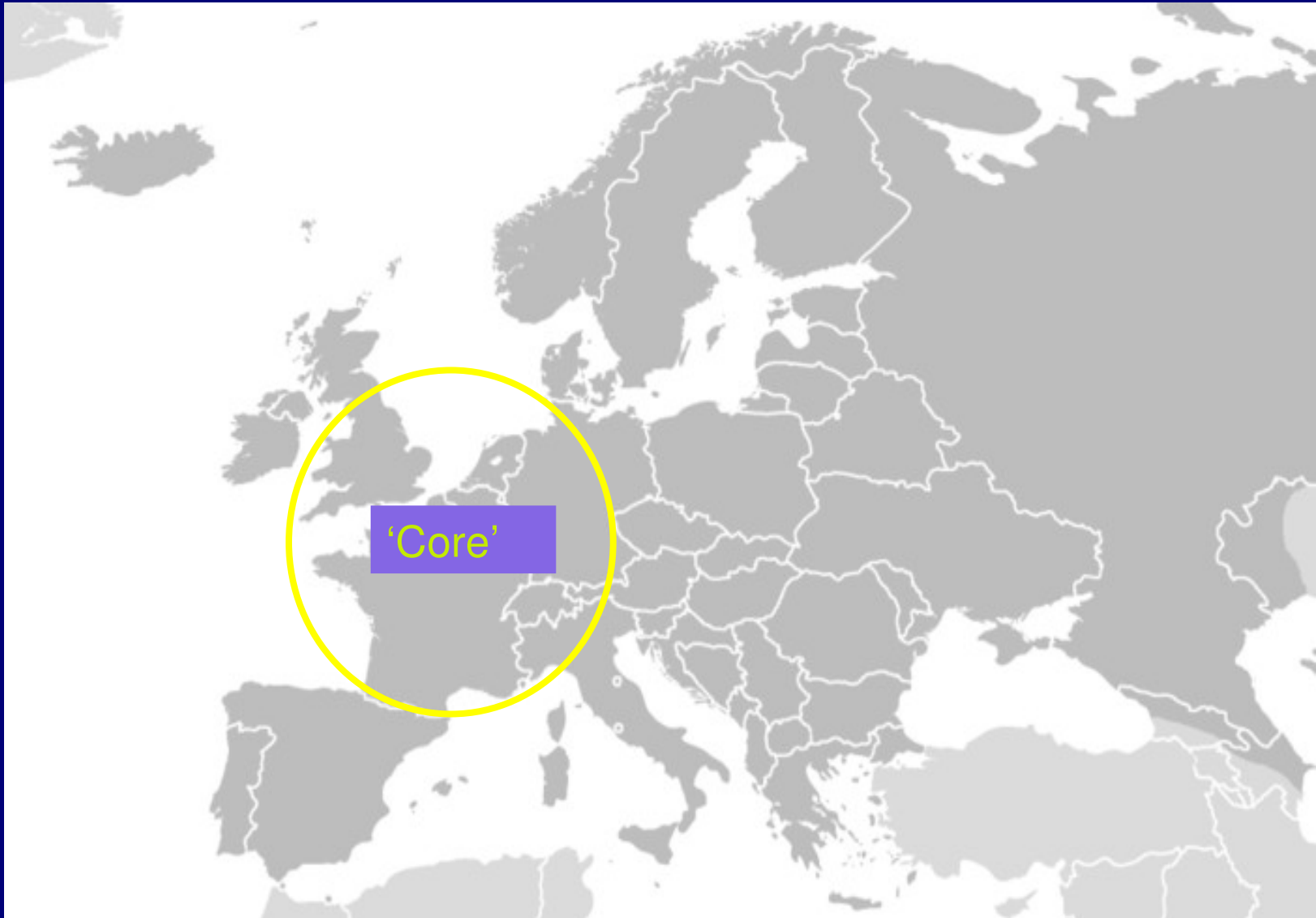
Definitions: 'Regions'

- 'Core' EU
 - Rich countries, early joiners
 - Many RIs
 - Facing West
- Newer EU
 - Poorer countries, late joiners
 - Hardly any RIs
 - Facing East or Southeast

Where are the RIs?

- EU-wide, DE, FR, UK = 64%
- 'Core' EU = 82%
- Rough numbers of RIs but actual spend probably more skewed

Source: ERID-Watch



Source: Wikipedia

What benefits do RIs bring?

- Skills
 - Attract talented researchers, stimulating mobility
- Inward investment
- Tech Clusters
 - Critical mass of research skills
 - New industrial applications
 - Interdependency of high-tech companies, research establishments, educational institutions
 - Collaborative research communities (across disciplines)
- ICT
 - High performances networks, Grid-enabled

What do Newer EU countries need?

- Skills
 - Attract talented researchers
- Inward investment
- Tech Clusters
 - Critical mass of research skills
 - New industrial applications
 - Interdependency of high-tech companies, research establishments, educational institutions
 - Collaborative research communities (across disciplines)
- ICT
 - High performances networks, Grid-enabled

What do Newer EU countries lack?

- Skills
 - Attractions for talented researchers
- Inward investment
- Tech Clusters
 - Critical mass of research skills
 - New industrial applications
 - Interdependency of high-tech companies, research establishments, educational institutions
 - Collaborative research communities (across disciplines)
- ICT
 - High performances networks, Grid-enabled

Pushmi-pullyu

- RIs want critical mass, economic multiplier effect, to exploit local country investments, good people, experienced management, local facilities, etc
 - Strong **PUSH** for RI investment into 'Core' EU
- Newer EU need inward investment, skills and management development, infrastructure development, economic gains
 - Weak **PULL** for RI investment into Newer EU
- Where does the RI Pushmi-pullyu go?

So.....

- How can we put Newer EU countries in a position to bid successfully for RIs?
 - Policy - make it happen, by giving preference?
 - Budget - isolate a budget element for RIs in Newer EU?
 - Developing local infrastructure (maybe using EU funds)?
 - Focus local funds on the best work in their own countries (how to decide?)

Problems.....

- Current budget barely meets needs of current RIs, let alone 34 new ESFRI RIs
- Level playing field
- Juste Retour
- Politics.....

Questions?

